

Annex 1

Audit Data

This section presents the data collected during the audit of the waterfront. Each map lists all of the documented land/water interfaces. These interfaces include landing steps, piers, fueling stations, public cargo working areas (PCWAs), and any other marine-related facilities.

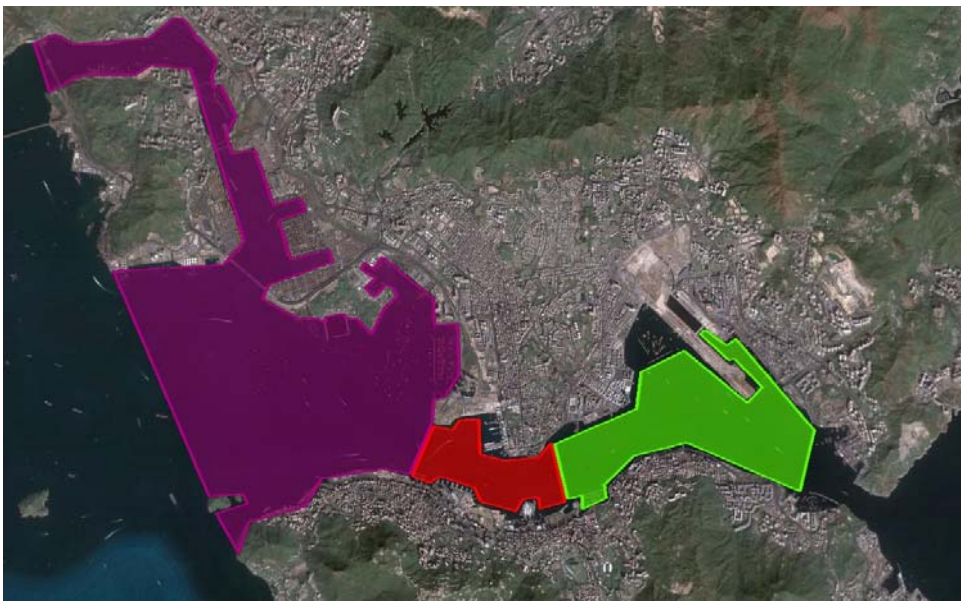


Figure A.1: Simple areas of activity around Victoria Harbour



Figure A.2: Detailed areas of activity around Victoria Harbour

The major land/water interfaces are presented by category in the following figures.



Figure A.3: Public Piers and Landing Steps



Figure A.4: Public Cargo Working Areas



Figure A.5: Ferry Services

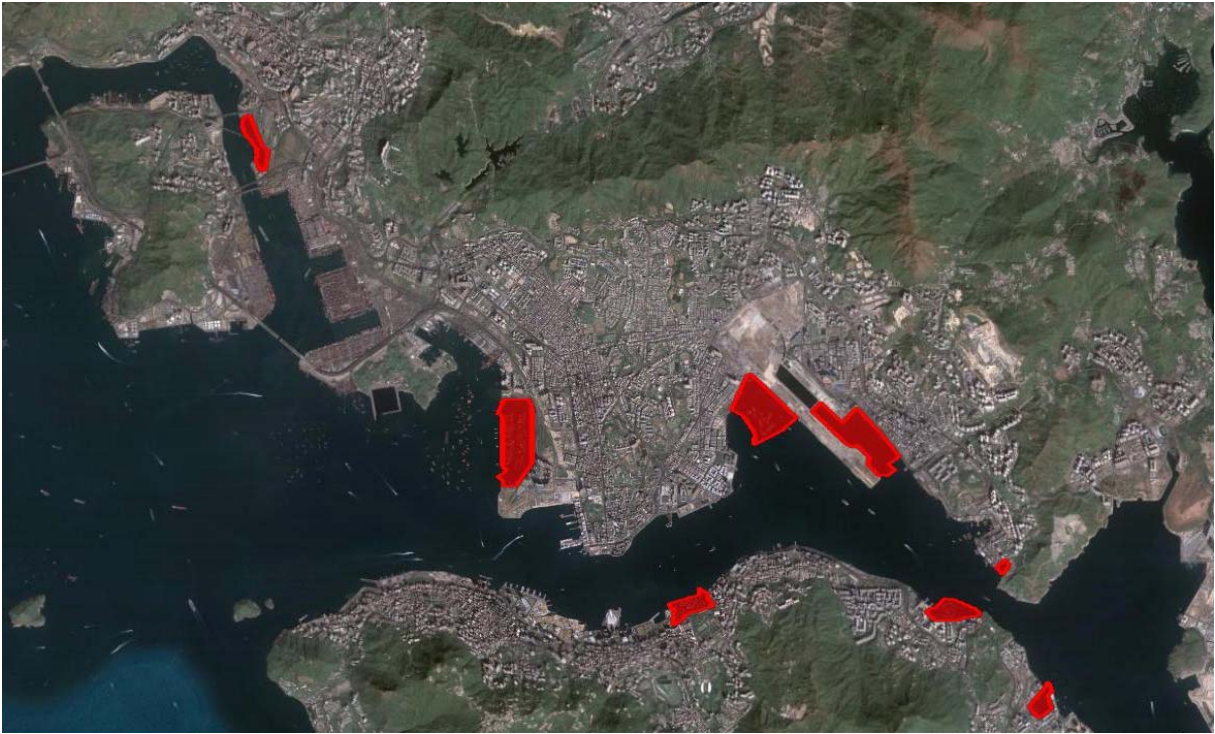


Figure A.6: Typhoon Shelters



Figure A.7: Fueling Locations

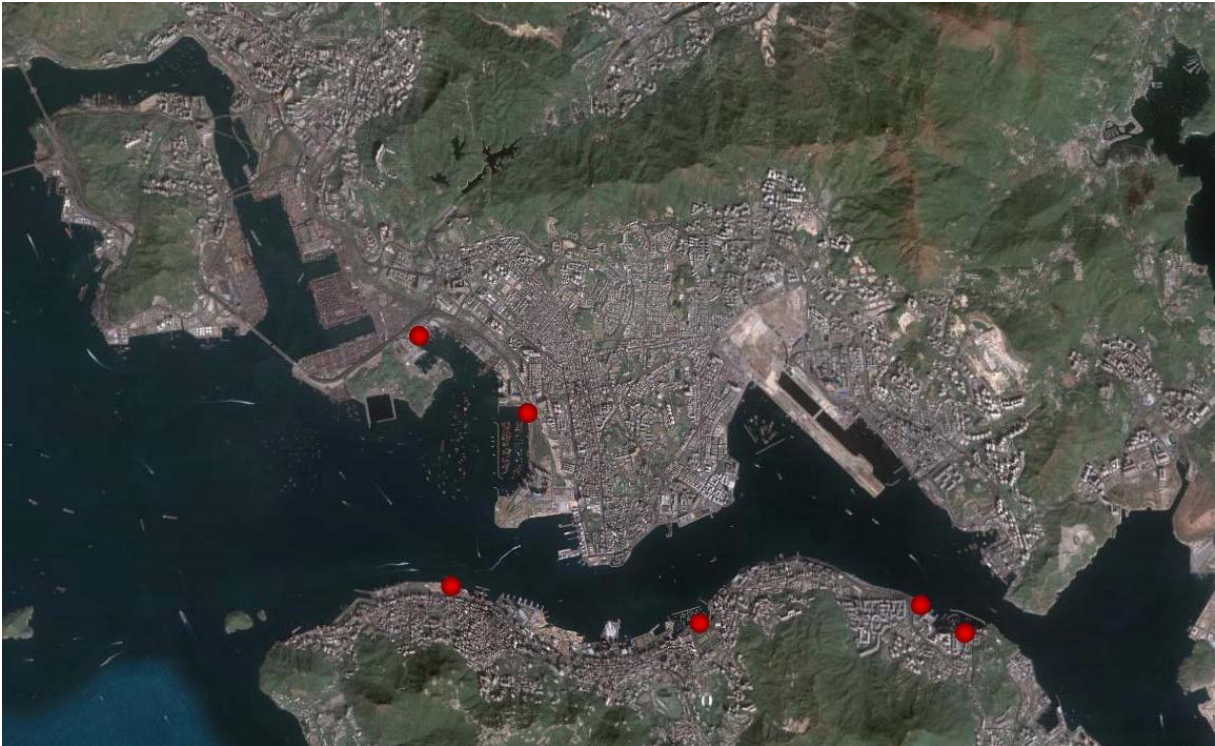


Figure A.8: Fresh Water Kiosks

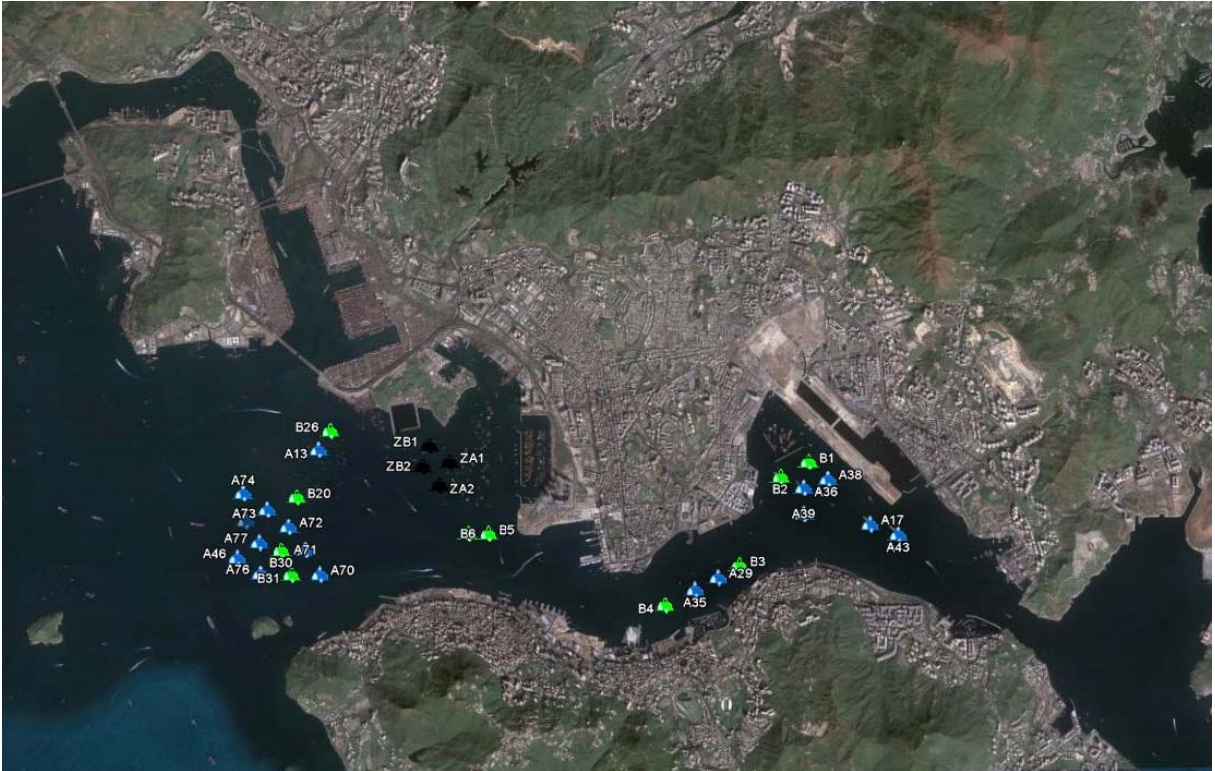


Figure A.9: Mooring Buoys

Land-Water Interfaces Total Count

Piers

Private Ferry Pier	17
Public (finger)	16
Cross Boundary Ferry Terminal	2
Floating/pontoon	4

Piers Total 39

Landing Steps 88

PCWA 7

Boat Yards 4

Club House 1

Diesel and Petrol Fueling Station 1

Water Kiosk 7

Typhoon Shelter 6

Fire Station (Marine) 3