

Harbour-front Enhancement Committee
Central Reclamation Phase III – Engineering Works
Proposed Protection Works for the Reclamation

Purpose

1. To consult Members on the proposal of implementing protection works at the Central Reclamation Phase III (CRIII) in order to remove constraints to the development of the new Central harbourfront arising from the delays to the implementation programme of the Central-Wan Chai Bypass (CWB).

Background

2. We commenced construction works for the CRIII project in February 2003 in order to provide land for the construction of the following essential transport infrastructure –

- (a) CWB;
- (b) Airport Railway extended overrun tunnel;
- (c) North Hong Kong Island Line; and
- (d) other supporting roads network.

3. The land provided by CRIII would also allow the development of the new Central harbourfront for public enjoyment. In this regard, Planning Department has already commissioned the Urban Design Study for the New Central Harbourfront to refine the urban design framework for the new Central harbourfront and provide detailed planning and design guidelines. According to the present progress of works, CRIII could be substantially completed around end 2009.

4. The section of CWB within the CRIII comprises a dual three-lane underground tunnel of approximately 950 metres in length. To minimise interface issues, the original intention was to construct this part of the CWB tunnel box together with the reclamation upon authorization of the CWB project. A section subject to excision¹ has been included in the CRIII contract for this purpose. However, the implementation programme of CWB has yet to be determined as a result of recent judicial review applications. Therefore, it is most unlikely that the CWB works could be implemented under the CRIII contract. Arising from this programme mismatch, development of a substantial part of the reclaimed land would have to be stalled pending implementation of the CWB works later. Judging from recent developments, we reckon that completion of this section of CWB and hence release of the land

¹ A section subject to excision is a separately identified part of the works included in the contract and this could only be implemented upon the decision made and conveyed to the contractor within a period prescribed in the contract.

above for harbourfront development would not be possible before mid 2013 at the earliest. This would be most undesirable given the Administration's intention to commence development of the new Central harbourfront at the earliest opportunity to meet public aspiration.

Proposal

5. To remove early the constraints to development, we propose to implement protection works under CRIII which comprise essentially building diaphragm sidewalls with a top slab along the future CWB alignment ("Protection Works"). A schematic diagram and a typical section of the Protection Works are shown in Annexes 1 and 2. The Protection Works would provide the necessary environment to ensure that the CWB tunnel box can be safely constructed underground later without opening up the reclaimed land.

6. We intend to implement the Protection Works under the current CRIII project. This would allow immediate commencement of the Protection Works subject to funding approval by the Legislative Council (LegCo) and the early completion of the works. Besides, it would help reduce abortive road, drainage and utility works to be constructed under the CRIII contract above the future CWB tunnel and minimise the interface problems. We plan to commence the Protection Works in early 2009 for completion by mid 2011. Upon completion of the Protection Works, the newly reclaimed land in the Central harbourfront will be available for development.

Way forward

7. We will further develop the design of the Protection Works and ascertain the cost involved. Upon completion these necessary steps, we would then submit an application to the LegCo Finance Committee to extend the scope of the CRIII project and increase the Approved Project Estimate for funding the Protection Works. Subject to approval of the funding application, we would commence the Protection Works immediately.

Conclusion

8. Members are invited to provide comments and suggestions on the proposal.

Attachments

Annex 1 – Central Reclamation Phase III – Proposed Protection Works



Annex 2 – Typical Section of Proposed Protection Works

Hong Kong Island and Islands Development Office
Civil Engineering and Development Department
20 October 2008






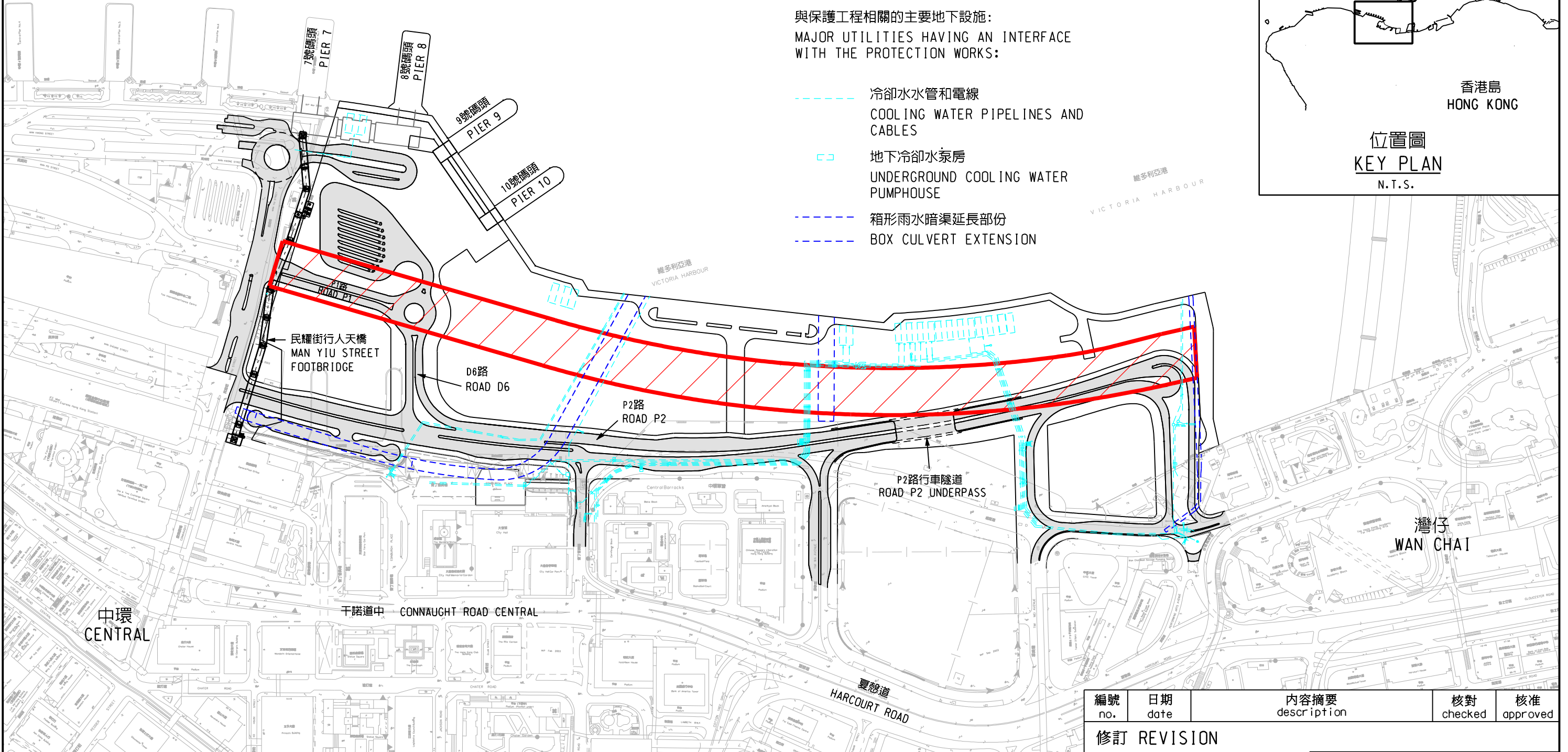
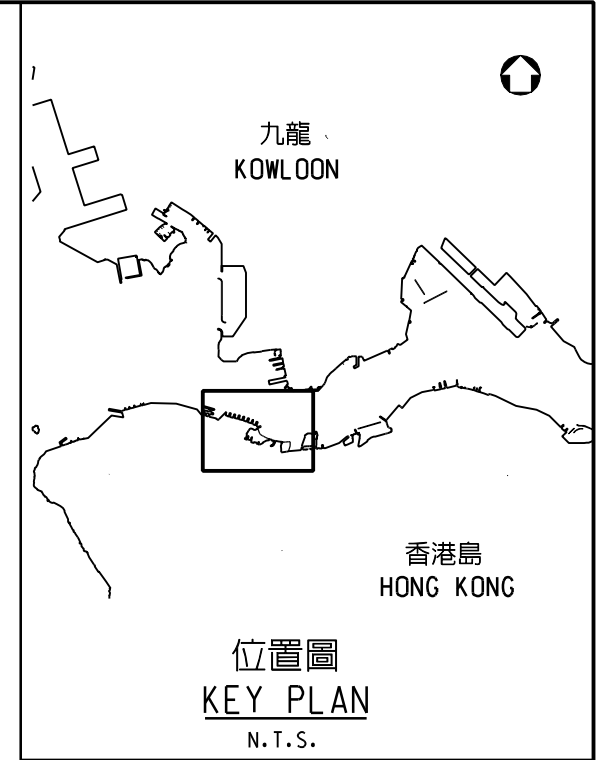
維多利亞港
VICTORY HARBOUR

圖例
LEGEND :


-  擬建之保護工程
PROPOSED PROTECTION WORKS
-  中環填海計劃第三期內之道路網
ROAD NETWORK IN CENTRAL RECLAMATION PHASE III

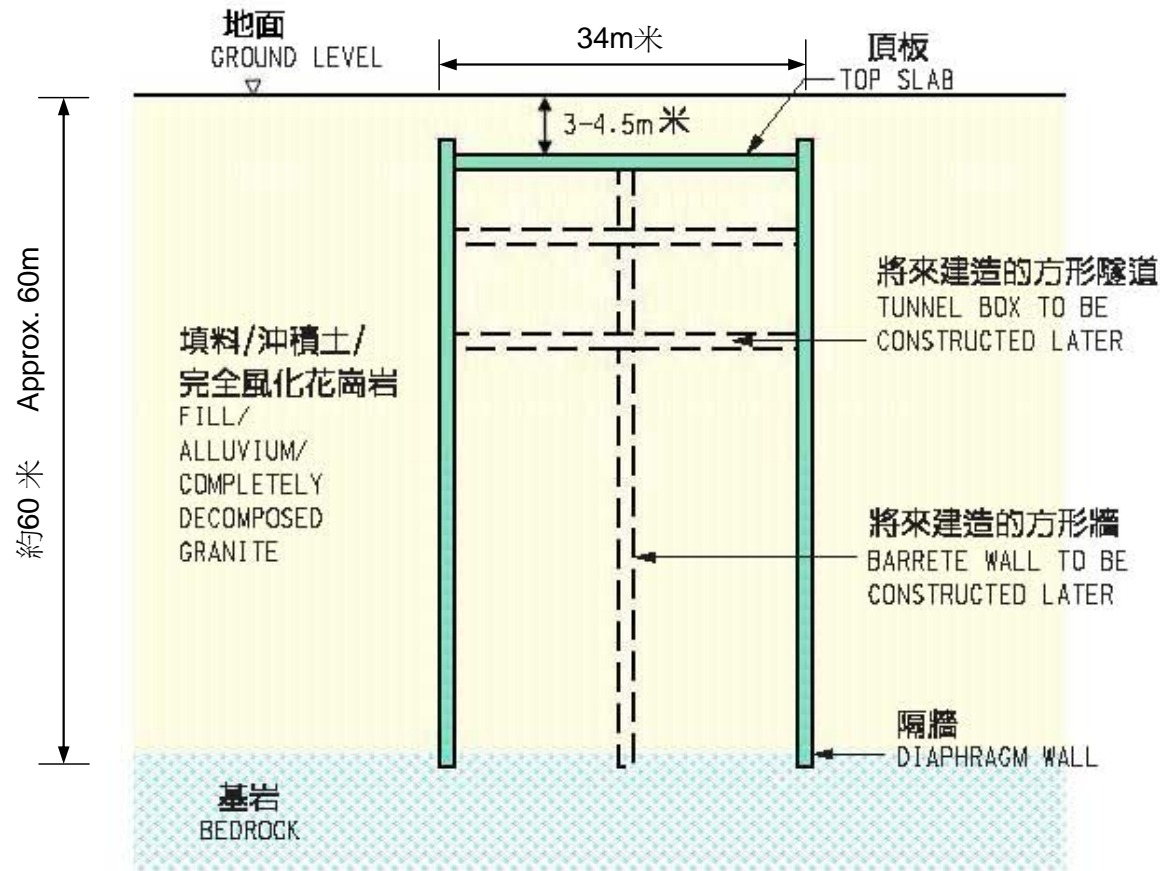
與保護工程相關的主要地下設施：
MAJOR UTILITIES HAVING AN INTERFACE WITH THE PROTECTION WORKS:

-  冷卻水水管和電線
COOLING WATER PIPELINES AND CABLES
-  地下冷卻水泵房
UNDERGROUND COOLING WATER PUMPHOUSE
-  箱形雨水暗渠延長部份
BOX CULVERT EXTENSION



編號 no.	日期 date	內容摘要 description	核對 checked	核准 approved
修訂 REVISION				

圖則名稱 drawing title 中環填海計劃第三期 - 擬建之保護工程 CENTRAL RECLAMATION PHASE III - PROPOSED PROTECTION WORKS	繪圖 drawn S.H.CHENG	簽署 initial SIGNED	日期 date 12-09-08	項目編號 item no.	辦事處 office 港島及離島拓展處 HONG KONG ISLAND AND ISLANDS DEVELOPMENT OFFICE  土木工程拓展署 CIVIL ENGINEERING AND DEVELOPMENT DEPARTMENT
	核對 checked S.K.KEUNG	簽署 initial SIGNED	日期 date 12-09-08	比例 scale 1 : 4000	
	核准 approved K.S.LI	簽署 initial SIGNED	日期 date 12-09-08	圖則編號 drawing no. HK I-484	



編號 no.	日期 date	內容摘要 description	核對 checked	核准 approved
修訂 REVISION				

圖名
drawing title

擬建保護工程之典型切面圖

TYPICAL SECTION OF PROPOSED PROTECTION WORKS

繪圖 drawn	簽署 initial	日期 date	項目編號 item no.	辦事處 office 香港及離島拓展處 HONG KONG ISLAND AND ISLANDS DEVELOPMENT OFFICE
核對 checked	簽署 initial	日期 date	比價 scale	
核准 approved	簽署 initial	日期 date	圖則編號 drawing no.	
S.H. CHENG	SIGNED	17-09-08		
S.K. KEUNG	SIGNED	17-09-08	N.T.S.	
K.S. LI	SIGNED	17-09-08	HKI-485	土木工程拓展署 CEPD CIVIL ENGINEERING AND DEVELOPMENT DEPARTMENT