

**HEC Sub-committee on
Wan Chai Development Phase II Review**

**Quick-win Project at ex-Public Cargo Working Area -
Design of Temporary Promenade at Wan Chai**

1. Purpose of the Paper

This paper seeks members' comments on the design of the proposed temporary waterfront promenade.

2. Background

2.1 At the Wan Chai Development Phase II Review Sub-committee (the Sub-committee) meeting held on 14 June 2005, the Chairman suggested that the Harbour-front Enhancement Review - Wan Chai, Causeway Bay and Adjoining Areas (HER) Task Force to discuss possible 'quick-win' projects at the Wan Chai and Causeway Bay harbour-front, taking into account the ideas received during the HER. At the Task Force meeting held on 1 August 2005, Task Force members requested Civil Engineering and Development Department (CEDD) to explore and work out a proposal for opening up the water-front area at the former public cargo working area along Hung Hing Road for public enjoyment, prior to commencement of the Wan Chai Development Phase II works.

2.2 CEDD subsequently planned improvements for the area to be opened up to the public and presented a proposal at the 10th Task Force meeting held on 10 October 2005. Wan Chai District Council (WCDC) was consulted on 23 May 2006. WCDC members generally supported the proposal.

2.3 Design and construction works for the promenade will be undertaken by Architectural Services Department while Leisure and Cultural Services Department will be the management agency. Construction works are planned to commence in September 2006 for completion by January 2007. The main features of the promenade design are outlined below.

3. Promenade Design Features

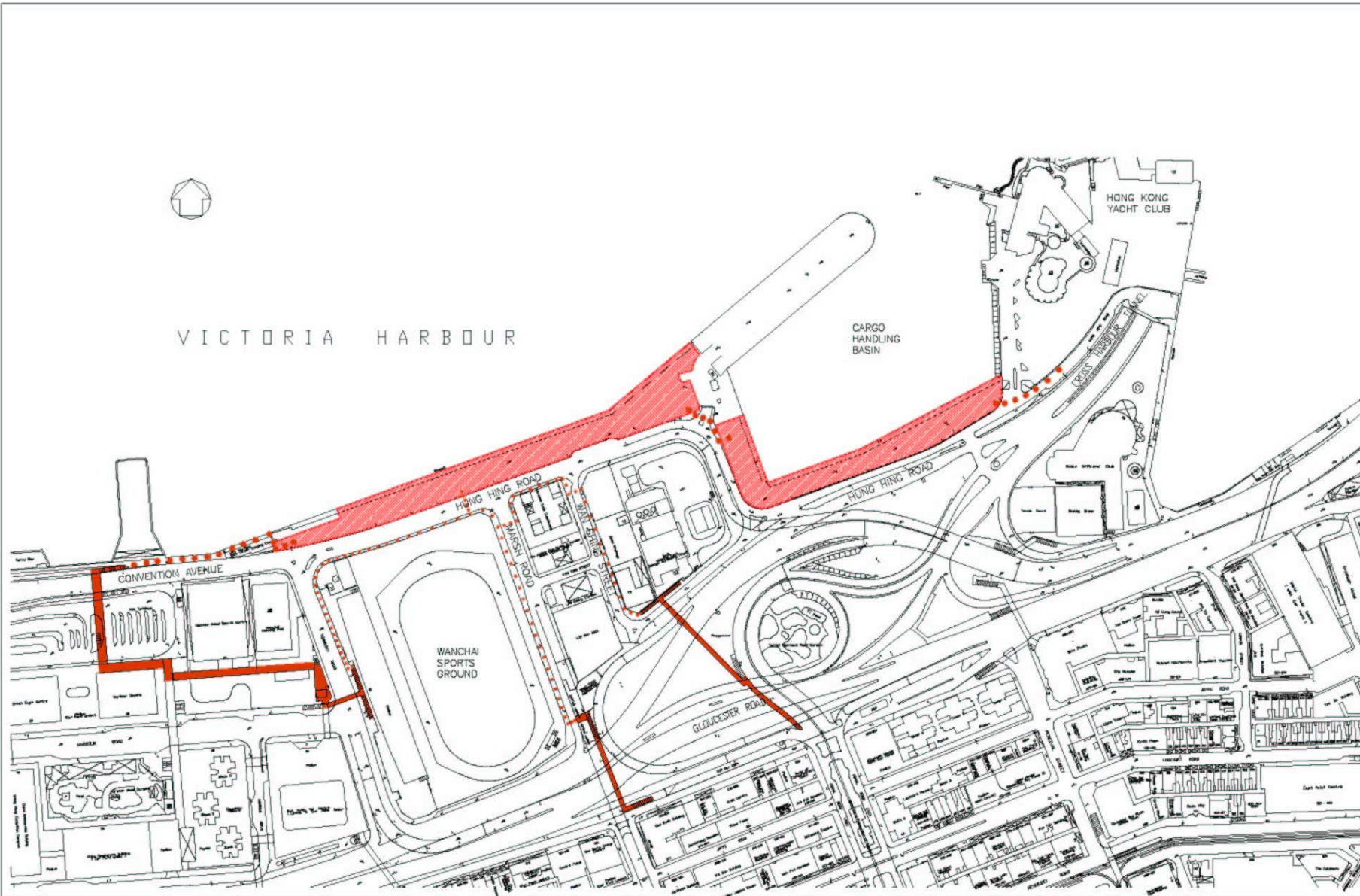
- 3.1 The location of the site is shown at **Annex A**. The existing temporary Government helipad entrance next to the former cargo handling basin divides the site into the western and eastern parts with lengths of about 320m and 250m respectively. A set of layout plans is at **Annex B**.
- 3.2 The public will be able to gain access to the western part of the promenade from the Wan Chai Ferry Pier area via the waterfront passage at the Wan Chai Salt Water Pumping Station managed by Water Supplies Department (WSD). WSD has agreed to open the passage for public use except on Monday mornings when maintenance works are required to be carried out. The public will be able to gain access to the eastern part of the promenade from the area adjacent to the Royal Hong Kong Yacht Club, or by an existing pedestrian crossing (near the entrance to the existing temporary Government helipad) across Hung Hing Road which links back to Canal Road West in Causeway Bay by existing footbridges over Gloucester Road. An opening will be provided at each of the eastern part and western part of the promenade at the entrance area of the existing temporary Government helipad to allow the public to walk from one part of the promenade to the other.
- 3.3 The width of the site varies from about 15m to 20m. Along the northern waterfront edge, a continuous timber boardwalk with a width of about 4m-5m is proposed. Along the southern edge, adjacent to Hung Hing Road, most of the existing roadside metal fencing is proposed to be removed to enhance visual accessibility to the harbour with only a few sections kept to support new covers to sheltered areas. To arouse public interest, metal sheet cut-outs of pet silhouettes are proposed to be installed along the road side as public art. This edge is proposed to be further softened by a bamboo screen.
- 3.4 The promenade is proposed to be opened to the general public and their pets with lawn areas suggested for a relaxed setting and two hard paved areas for holding events. Facilities, including bins for pet waste collection, benches and lighting etc, will be provided along the promenade. A container for maintenance equipment storage will be provided.
- 3.5 All works are proposed to be constructed on top of the existing concrete paved site with gentle ramps for barrier free access provided to bridge the difference between the existing pavement and future built-up ground level.

4. Advice Sought

Members are invited to comment on the design of the proposed promenade.

Architectural Services Department
Civil Engineering and Development Department

August 2006



NOTES

8 AUGUST 2006

PRELIM DRAFT FOR COMMENTS

| no. | date | description |
|-------------------|--------|-------------|
| REVISION | | |
| drawn | | |
| checked | | |
| approved | | |
| Chief Architect | _____ | _____ |
| Senior Architect | _____ | _____ |
| Project Architect | _____ | _____ |
| | signed | date |

contract no.

file no.

project no.

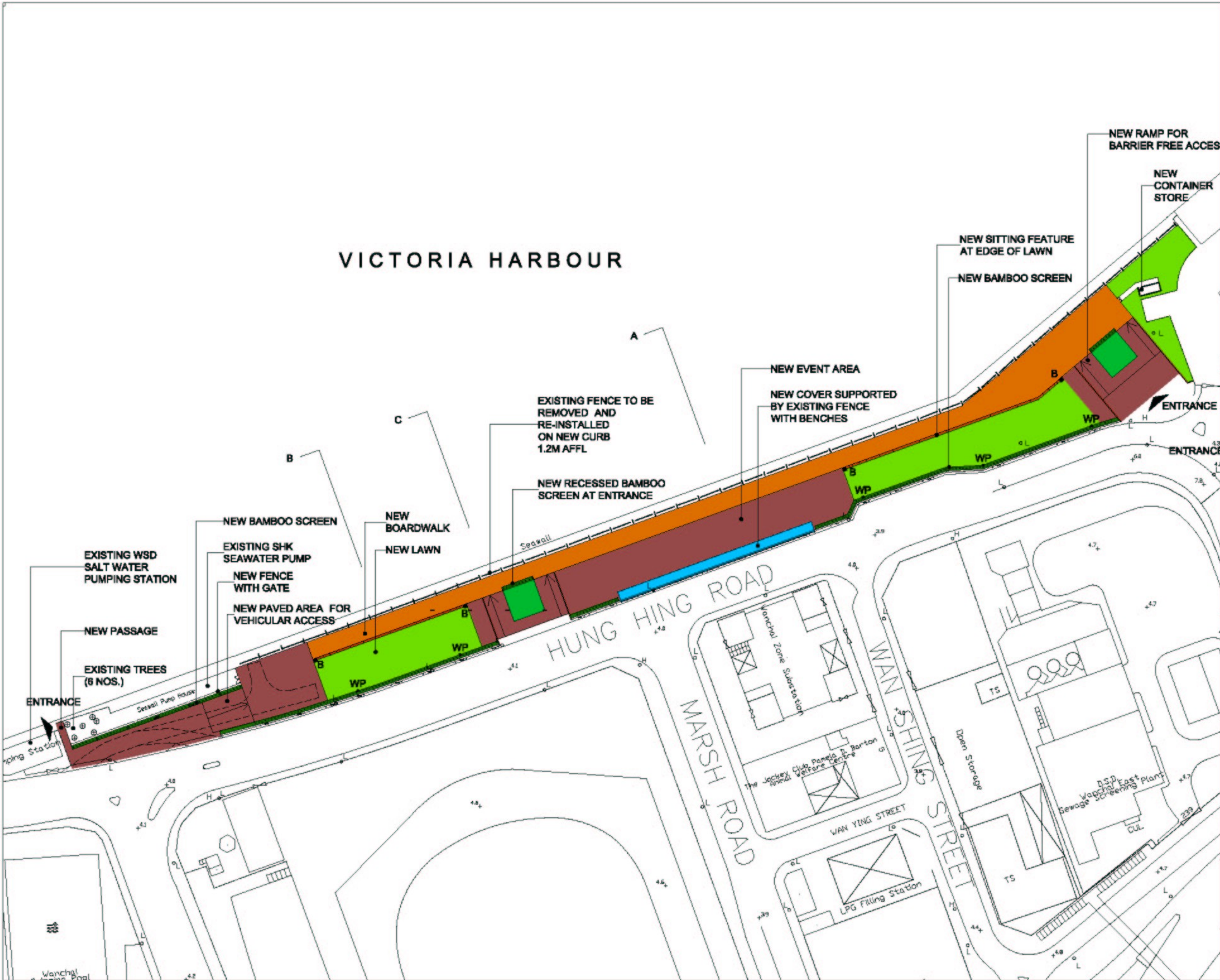
contract
**TEMPORARY PROMENADE
AT WAN CHAI**

drawing title
LOCATION AND ACCESS

| | |
|-------------------------------------|----------------------------|
| drawing no. AB/7183/SK001 | scale 1:3000(A3) |
|-------------------------------------|----------------------------|

office
ARCHITECTURAL BRANCH





- NOTES
- BOARDWALK
 - LAWN
 - BAMBOO
 - PLANTER
 - PAVING BLOCK
 - COVERED AREA
 - BRICKWORK
 - PET SILHOUETTE CUT-OUT
 - WP IRRIGATION POINT
 - B PET WASTE BIN

8 AUGUST 2006
 PRELIM DRAFT FOR COMMENTS

| no. | date | description |
|-------------------|--------|-------------|
| REVISION | | |
| drawn | | |
| checked | | |
| approved | | |
| Chief Architect | _____ | _____ |
| Senior Architect | _____ | _____ |
| Project Architect | _____ | _____ |
| | signed | date |

contract no.
 file no.

project no.

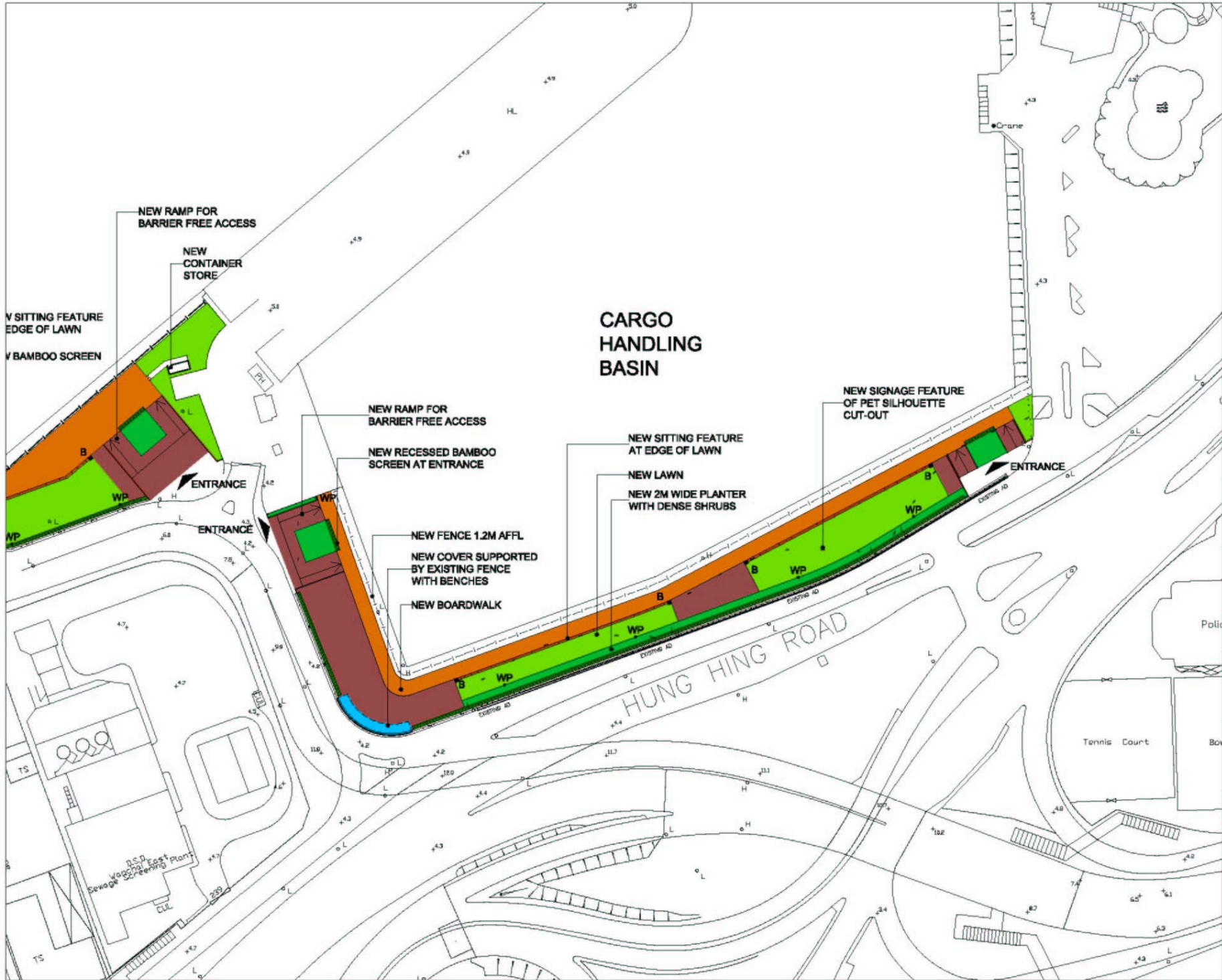
contract
TEMPORARY PROMENADE AT WAN CHAI

drawing title
LAYOUT PLAN (WEST ZONE)

| | |
|-------------------------------------|---------------------------|
| drawing no. AB/7183/SK002 | scale 1:750(A3) |
|-------------------------------------|---------------------------|

office
ARCHITECTURAL BRANCH





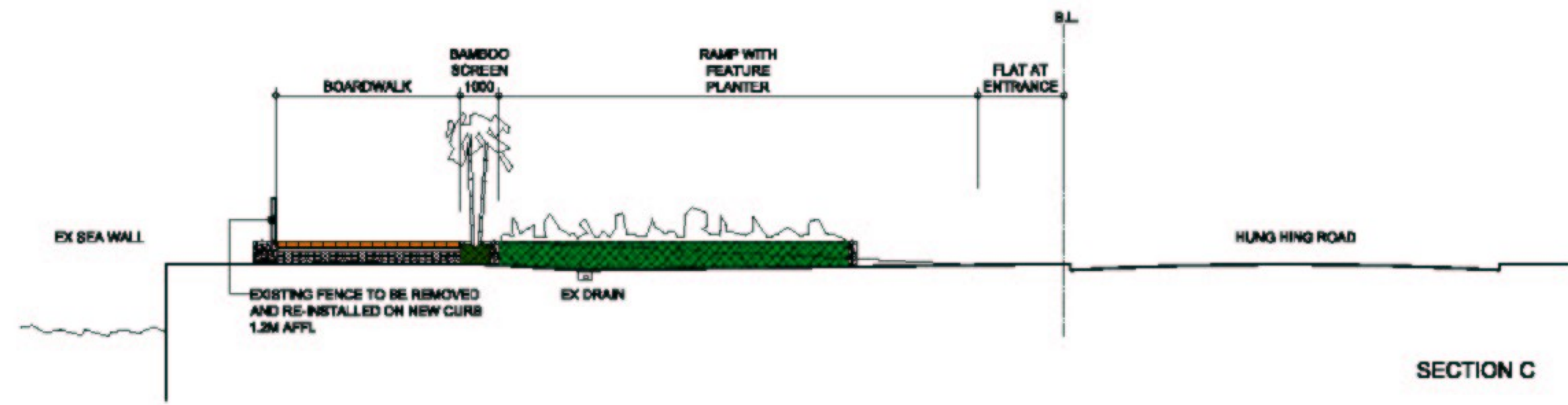
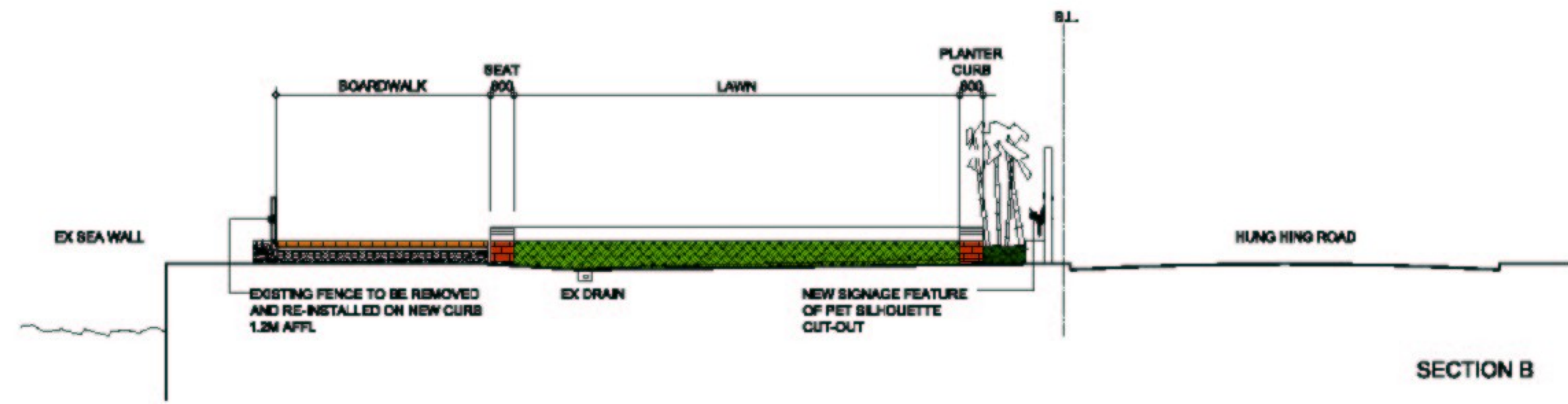
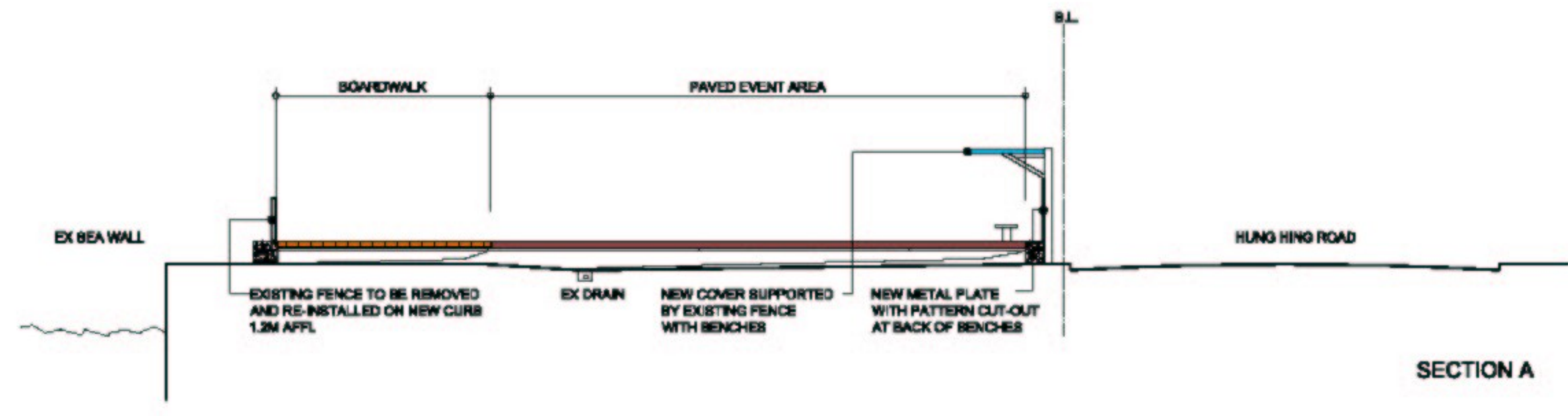
NOTES

- BOARDWALK
- LAWN
- BAMBOO
- PLANTER
- PAVING BLOCK
- COVERED AREA
- BRICKWORK
- PET SILHOUETTE CUT-OUT
- WP IRRIGATION POINT
- B PET WASTE BIN

8 AUGUST 2006
 PRELIM DRAFT FOR COMMENTS

| no. | date | description |
|--|------|---------------------------|
| REVISION | | |
| drawn | | |
| checked | | |
| approved | | |
| Chief Architect | | |
| Senior Architect | | |
| Project Architect | | |
| | | signed _____ date _____ |
| contract no. | | |
| file no. | | |
| project no. | | |
| contract TEMPORARY PROMENADE AT WAN CHAI | | |
| drawing title LAYOUT PLAN (EAST ZONE) | | |
| drawing no. AB/7183/SK003 | | scale 1:750(A3) |
| office ARCHITECTURAL BRANCH | | |





CONCEPTUAL ELEVATION

NOTES

| | |
|--|------------------------|
| | BOARDWALK |
| | LAWN |
| | BAMBOO |
| | PLANTER |
| | PAVING BLOCK |
| | COVERED AREA |
| | BRICKWORK |
| | PET SILHOUETTE CUT-OUT |
| | IRRIGATION POINT |
| | PET WASTE BIN |

8 AUGUST 2006
PRELIM DRAFT FOR COMMENTS

| no. | date | description |
|-------------------|--------|-------------|
| REVISION | | |
| drawn | | |
| checked | | |
| approved | | |
| Chief Architect | _____ | _____ |
| Senior Architect | _____ | _____ |
| Project Architect | _____ | _____ |
| | signed | date |

contract no.
file no.
project no.
contract
TEMPORARY PROMENADE AT WAN CHAI

drawing title
SECTIONS AND ELEVATION
drawing no.
AB/7183/SK004
scale
1:200(A3)

office
ARCHITECTURAL BRANCH

