

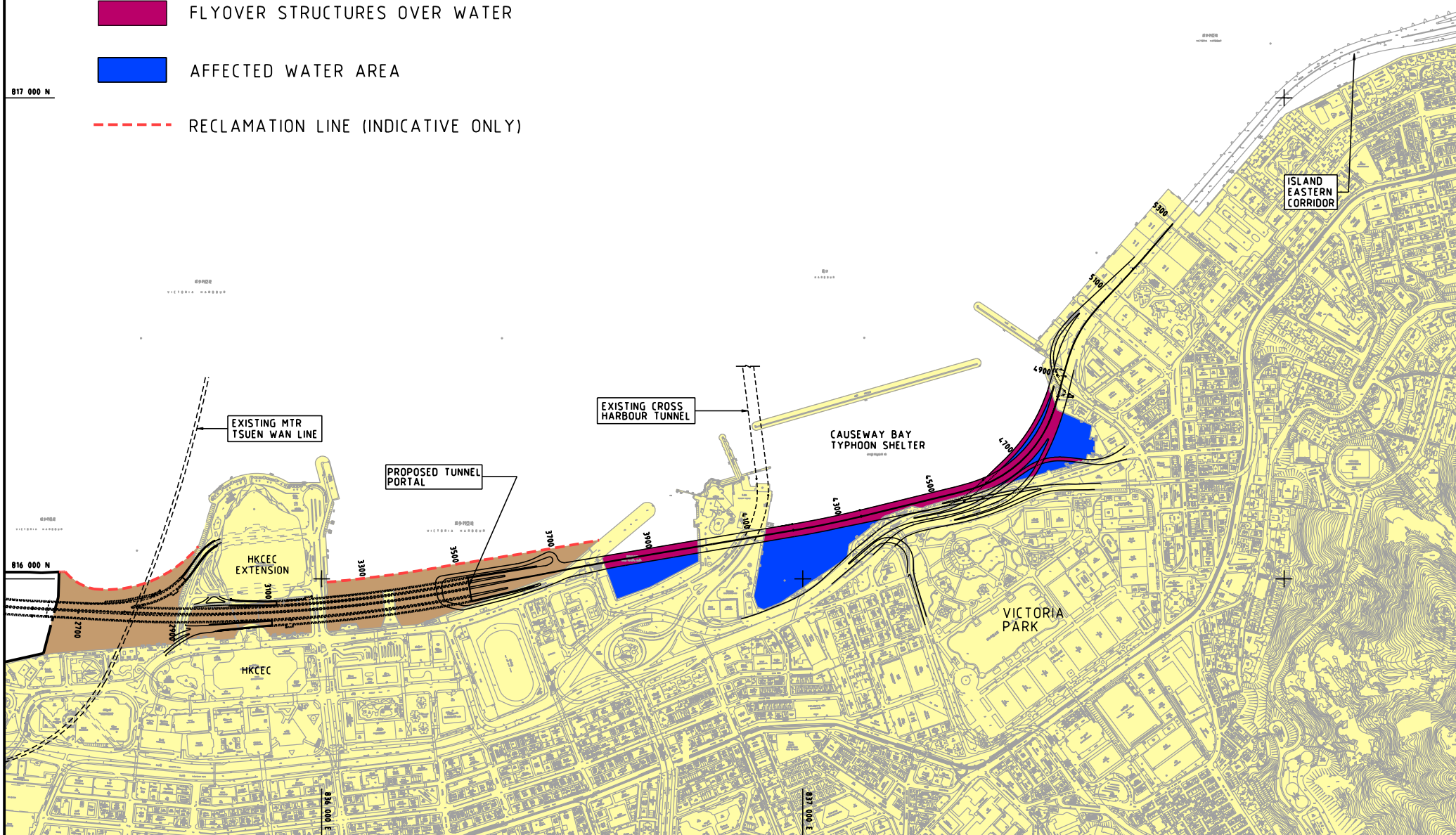
# LEGEND:

NEW LAND FORMED (PERMANENT RECLAMATION)

FLYOVER STRUCTURES OVER WATER

AFFECTED WATER AREA

RECLAMATION LINE (INDICATIVE ONLY)



WAN CHAI DEVELOPMENT PHASE II - PLANNING AND ENGINEERING REVIEW

## AFFECTED AREAS OF THE HARBOUR - FLYOVER

FIGURE 4.12