

# A VIBRANT VICTORIA HARBOUR



2/2009

An Evaluation of 48 Leisure and  
Cultural Sites

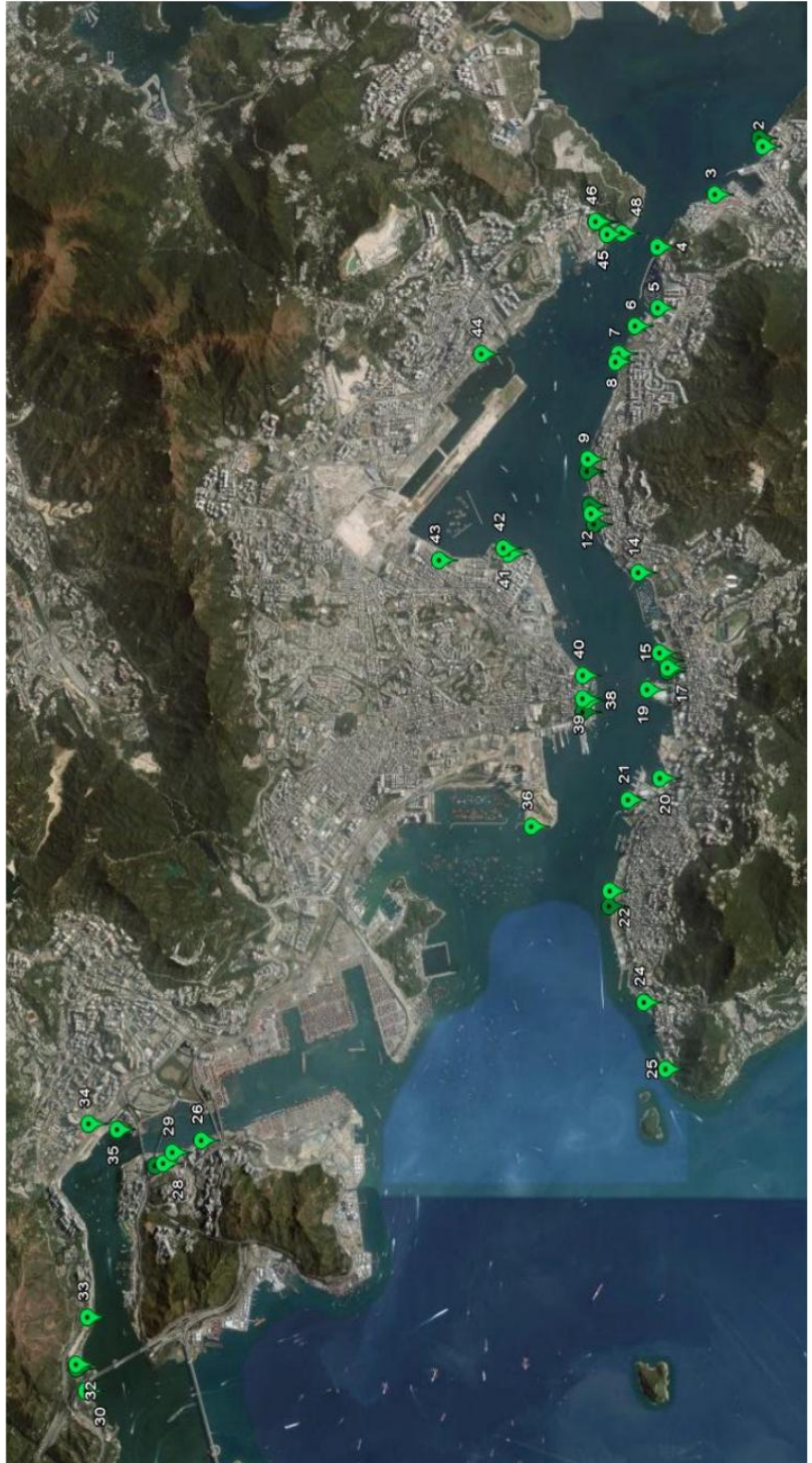
Nathaniel Jannetti

Aubrey Scarborough

Paul Smith

Elizabeth Tuite

Map illustrating the locations of our 48 sites along Victoria Harbour.



Courtesy of Google Maps

# CONTENTS

<b>TABLE OF CONTENTS</b> .....	<b>III</b>
<b>SUMMARY</b> .....	<b>IV</b>
<b>TYOLOGY</b> .....	<b>V</b>
Parks and Gardens .....	v
Sports Facilities .....	v
Promenades .....	v
Beaches.....	vi
Playgrounds.....	vi
Cultural Facilities.....	vi
<b>OVERVIEW SHEETS</b> .....	<b>1</b>
Eastern Hong Kong Island .....	1
Wan Chai.....	15
Central & Western Hong Kong Island.....	20
Kwai Tsing .....	26
Tsuen Wan .....	30
Yau Tsim Mong.....	36
Kowloon City .....	41
Kwun Tong.....	44

## SUMMARY

Our study assessed forty-eight sites along the waterfront of Victoria Harbour in order to enhance the value of each site, to make better use of its harbour front location, and to improve the appeal of the harbour as a whole. To formulate a basis for our suggestions, we researched international waterfront cities, Baltimore, Boston, Tokyo, and Sydney, in addition to observing various sites in Hong Kong not located on Victoria Harbour, such as Sai Kung and Repulse Bay. Through this research we identified both positive and negative qualities that added or detracted from the site's vibrancy: accessibility, connectivity, quality and design/maintenance.

To evaluate the state of each of the LCSD locations, we formulated a methodology consisting of three parts: site observations, user and resident surveys, and hotel interviews. Our final Suggestions took into consideration our past research as well as the opinions of our interviewees.

As a result of our research we have decided that the four aforementioned qualities were essential and made a grading system for each category:

**Accessibility:** A measure of available facilities to enable an able-bodied person to reach the site.

**Connectivity:** a measure of how well the site connects people to the hinterland and along the waterfront; and how easy it is for an able-bodied person to enter the site.

**Quality:** the ability of a site to provide people with things to do and encourage people to stay at the site.

**Design/Maintenance:** the measure of how well the aesthetic appeal of the site is upheld and enhanced.

The star ratings indicate how each site responded to each of the qualities. For more in depth information about our analysis, please refer to our full report.

Please note the limited amount of time for data gathering. Our observations apply to the month of January and February only. Sites such as pools and beaches may be marked "N/A" for some ratings, due to the winter season.

For more information about our report please feel free to e-mail us at [designhk@wpi.edu](mailto:designhk@wpi.edu).

Visit the Business Environment Council's website at [ww.bec.org.hk](http://ww.bec.org.hk) and contact Ms. Elanna Tam at [elanna@bec.org.hk](mailto:elanna@bec.org.hk), or visit Designing Hong Kong website, [www.designinghongkong.com](http://www.designinghongkong.com), email [info@designinghongkong.com](mailto:info@designinghongkong.com).



## TPOLOGY

### Parks and Gardens:

#### Eastern

- 07 - Quarry Bay Park
- 09 - Man Hong Street Playground
- 12 - Tong Shui Road Garden
- 13 - Provident Garden
- 14 - Whitfield Road Rest Garden

#### Central & Western

- 24 - Belcher Bay Park

#### Tsuen Wan

- 34 - Tsuen Wan Park
- 35 - Tsuen Wan Riviera Park

#### Kowloon City

- 43 - Hoi Sham Park

#### Kwun Tong

- 44 - Hoi Bun Road Sitting-out Area
- 45 - Lei Yue Mun Typhoon Shelter Breakwater Sitting-Out Area
- 47 - Lei Yue Mun Waterfront Sitting-Out Area
- 48 - Lei Yue Mun Rest Garden

### Sports facilities:

#### Eastern

- 02 - Siu Sai Wan Sports Ground

#### Wan Chai

- 16 - Wan Chai Sports Ground
- 17 - Wan Chai Swimming Pool
- 18 - Harbour Road Sports Centre

#### Central & Western

- 22 - Sun Yat Sen Memorial Park and Swimming Pool
- 23 - Western Park Sports Centre
- 25 - Kennedy Town Temporary Recreation Ground

#### Kwai Tsing

- 27 - Tsing Yi Swimming Pool
- 28 - Tsing Yi Sports Ground

#### Kowloon City

- 41 - Tai Wan Shan Swimming Pool

#### Kwun Tong

- 46 - Lei Yue Mun Sports Centre

### Promenades:

#### Eastern

- 01 - Siu Sai Wan Promenade
- 05 - Aldrich Bay Promenade
- 06 - Sai Wan Ho Harbour Park
- 10 - North Point Ferry Concourse Promenade
- 11 - North Point Promenade

**Wan Chai**

15 - Wan Chai Waterfront Promenade

19 - Wan Chai Temporary Promenade

**Central & Western**

21 - Promenade fronting piers 1-9

**Kwai Tsing**

26 - Cheung Fai Promenade

29 - Tsing Yi Promenade

**Yau Tsim Mong**

36 - West Kowloon Waterfront Promenade

40 - Tsim Sha Tsui Promenade

**Kowloon City**

42 - Tai Wan Shan Park Promenade

**Beaches:**

**Tsuen Wan**

30 - Lido Beach

32 - Ting Kau Beach

33 - Approach Beach

**Playgrounds:**

**Eastern**

03 - Heng Fa Cheung Playground

**Tsuen Wan**

31 - Ting Kau Village Playground

**Cultural Facilities:**

**Eastern**

04 - Museum of Coastal Defense

08 - Fireboat Alexander Grantham

**Central & Western**

20 - Hong Kong City Hall

**Yau Tsim Mong**

37 - Hong Kong Cultural Centre

38 - Hong Kong Museum of Art

39 - Hong Kong Space Museum

# Siu Sai Wan Promenade



## Ratings

Accessibility



Connectivity



Quality



Design/  
Maintenance



Popularity



## Location and Overview

Located on Siu Sai Wan Road, Siu Sai Wan, Eastern District.  
 Category: Promenade/Park.  
 Primary Users: Residents.

## Features

One landing step • Children’s playground • Soccer pitch • Elderly fitness station • Two fitness stations • One pebble walking path • Changing rooms • Toilets • Arbours • Two drinking fountains

## Suggestions

### Connectivity

Upper seating area in front of mall and area below it not connected.  
 Add stairs to for better access to water.

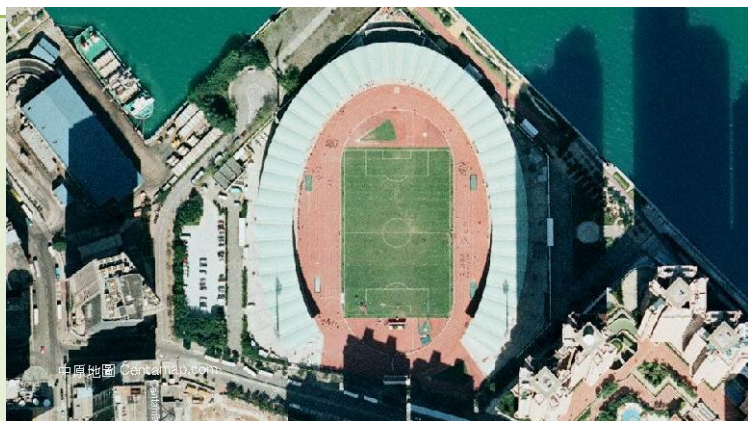
### Quality

The lower walkway has no benches. Many benches along the upper walkway were in use. Add more benches to the lower promenade.

### Design/Maintenance

Replace waterfront fence with one that does not obstruct view. • Move concrete storage box to another site and replace with a garden. • Replace fence around football pitch with one matching tall green ones at the corner of the field. Plant trees and add greenery around the pitch for shade. • Some planted areas are in need of maintenance. Add more greenery and flowers to the gardens.

# Siu Sai Wan Sports Ground



## Ratings

Accessibility



Connectivity



Quality



Design/  
Maintenance



Popularity



## Location and Overview

Located at 8 Fu Hong Street, Siu Sai Wan, Eastern District.

Category: Sports Facility.

Primary Users: Residents.

## Features

A 400m 8-lane athletic track with all-weather surface • A 100m 4-lane warm-up track • One standard size natural turf soccer pitch • Shot put, discus and javelin throw rinks • Areas for long jumps and pole vaults • Fast food kiosk • Spectator stand, seat 14,000 • Six changing rooms • Record keeping room • First aid room • Two VIP rooms • Anti-doping room • Scoreboard

## Suggestions

### Connectivity

Create connective promenade around the perimeter of the sports grounds.

### Quality

Use the rooftop of the changing space as a viewing area connected to the stands. • Add a food kiosk on roof top and along perimeter of sports ground facing inside and outside).

### Design/Maintenance

Remove giant pile of rubbish bins that can be seen from the stands.



# Heng Fa Cheung Playground



## Ratings

Accessibility



Connectivity



Quality



Design/  
Maintenance



Popularity



## Location and Overview

Located on Shing Tai Road, Eastern District.  
Category: Park/Garden.  
Primary Users: Residents.

## Features

Soccer pitch • Children's playground • Toilets • Elderly fitness station • Pavilions • Drinking fountains

## Suggestions

### Quality

Add shade to the seating along the promenade. Visitors tend to sit away from promenade due to lack of shade.

### Design/Maintenance

One end of promenade area was not well planted. Add more greenery and replace gardens.



# Museum of Coastal Defense



## Ratings

Accessibility



Connectivity



Quality



Design/  
Maintenance



Popularity



## Location and Overview

Located at 175 Tung Hei Road, Shau Kei Wan, Eastern District.  
 Category: Cultural Facility.  
 Primary Users: Residents/Tourists.

## Features

Footpath along waterfront • Two exhibition galleries • Cafe •  
 Bookshop • Historical trail • Outdoor exhibits

## Suggestions

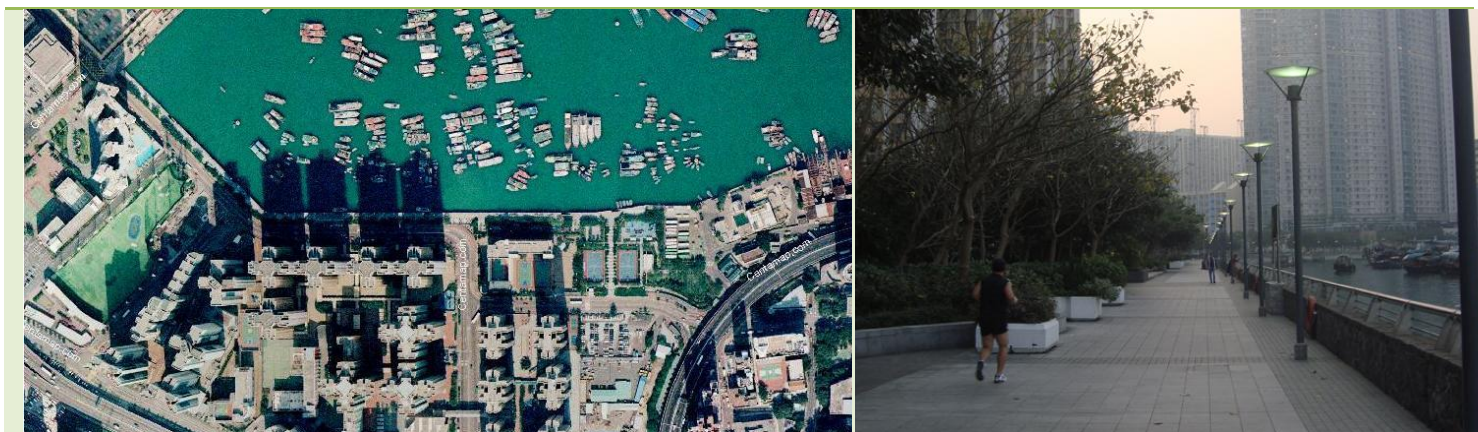
### Connectivity

Continue the promenade from Heng Fa Chuen Playground along the water to the Museum and continue towards Aldrich Bay Promenade. •  
 Add entrance booth to the waterfront path of the museum.

### Vibrancy

Lacks permanent toilets at water level. Add toilets. • Add dual-language menu on top of cafe's counter, for easier communication.

# Aldrich Bay Promenade



## Ratings

Accessibility



Connectivity



Quality



Design/  
Maintenance



Popularity



## Location and Overview

Located on Oi Lai Street, Shau Kei Wan, Eastern District.

Category: Promenade.

Primary Users: Residents.

## Features

Six landing steps • Children’s playground • Two basketball courts • Fitness station • Pebble walking trail • Tai Chi area • Toilets • Drinking fountains

## Suggestions

### Connectivity

Add gates to landing steps. • Add signage towards Sai Wan Ho Harbour Park. • Add signage and information for transport to Lei Yue Mun and the outlying islands.

### Quality

Tiled area is covered by potted plants. Replace area with food kiosk or game tables. • Add distance markings along promenade for joggers, runners, walkers. Such markings are used in Belcher Bay Park.

# Sai Wan Ho Harbour Park



## Ratings

Accessibility



Connectivity



Quality



Design/  
Maintenance



Popularity



## Location and Overview

Located on Tai Hong Street, Quarry Bay, Eastern District.

Category: Promenade.

Primary Users: Residents.

## Features

One landing step • Fitness station • Pebble walking path

## Suggestions

### Connectivity

Large water-testing area blocked off from access. Obstructs main entrance of park. Replace large open space within fence with smaller area and smaller fence. • Add signs to Aldrich Bay Promenade. • Remove poorly maintained greenery between park and Quarry Bay Park.

### Quality

Create dog park area within the park. Make sure area is patrolled to keep area clean.

### Design/Maintenance

Remove rusting fence from water kiosk. • Add small food kiosk (such as ice cream) to promenade side of kiosk. • Fitness station is under disrepair. Repaint as necessary, redesign and replace old tiles.



# Quarry Bay Park



## Ratings

Accessibility



Connectivity



Quality



Design/  
Maintenance



Popularity



## Location and Overview

Located on Tai Koo Shing Road, Quarry Bay, Eastern District.  
Category: Park  
Primary Users: Residents

## Features

One landing step • Eight tennis courts • Two artificial turf soccer pitches • Four Basketball courts • Jogging track and cycling track • Three fitness stations • Two elderly fitness stations • Four children's playgrounds

## Suggestions

### Accessibility

Add wide subway underneath highway to site.

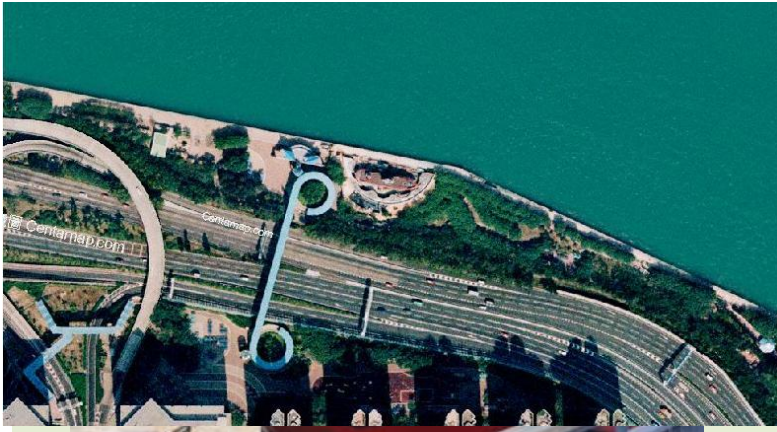
### Connectivity

Lay dirt pathways between brick paths with matching brick. • Open park to the west side.

### Quality

Place benches on the grassy areas along the promenade to save room and add seating. • Place game tables in this area under overpass. • Allow waterfront restaurants, like those found in Lamma Island.

# Fireboat Alexander Grantham



## Ratings

Accessibility



Connectivity



Quality



Design/  
Maintenance



Popularity



## Location and Overview

Located in Quarry Bay Park on Hoi Chak Street, Eastern District.  
 Category: Cultural Facility.  
 Primary Users: Residents.

## Features

Semi-open exhibition gallery • Information kiosk

## Suggestions

### Quality

There are informative video exhibits. In the middle television area the rightmost TV is not lined up properly and the languages buttons do not give the correct language. Reprogram the touch screen.

### Design/Maintenance

Abrupt stop along Quarry Bay paths to white wall around the Fireboat seen from the outside of the exhibit. Surrounding wall needs greenery, ivy, mural. •Lighting not seen at night makes fireboat difficult to see. Leave lighting on at night. • Put a “Rubbish” sticker or an LCSD logo on it the rubbish bins.



# Man Hong Street Playground



## Ratings

Accessibility



Connectivity



Quality



Design/  
Maintenance



Popularity



## Location and Overview

Located on Man Hong Street, North Point, Eastern District.

Category: Park/Garden.

Primary Users: Residents.

## Features

Arbours • Shaded benches

## Suggestions

### Accessibility

The site is not a playground. Could prove deceiving for visitors with children. Change name to "Man Hong Street Sitting-Out Area."

Narrow unmarked pathway leads to the site from the street. Widen pathway and add signage for easier access.

Located behind the ICAC building. Perhaps collaborate with ICAC building to open their gated park for beautification of area. Create lunch area for employees.

# North Point Ferry Concourse Promenade



## Ratings

Accessibility



Connectivity



Quality



Design/  
Maintenance



Popularity



## Location and Overview

Located on Java Road, North Point, Eastern District.

Category: Promenade.

Primary User: Residents.

## Features

Arbours • Shaded benches • Basketball court

## Suggestions

### Quality

Basketball court in use during visits. Technically a different LCSD site, however sites are connected. Adds activity to North Point Ferry Concourse Promenade.

Large open space at entrance of the site. Allow ball games in the open space or cycling for children. Place a playground within area.

Few restaurants or food kiosks within the surrounding area. Add vending or food kiosk.

### Design/Maintenance

Benches along the promenade had cages on the back. Keeps seated visitors safe from flyaway balls and other sports.

Fence as a barrier to the road. Replace fence with a noise barrier wall and plant trees to make it more aesthetically pleasing.

# North Point Promenade



## Ratings

Accessibility



Connectivity



Quality



Design/  
Maintenance



Popularity



## Location and Overview

Located on Java Road, North Point, Eastern District.

Category: Promenade.

Primary User: Residents.

## Features

Arbours • Benches • Two pebble walking trails

## Suggestions

### Accessibility

Use parking lot and vacant lot for the creation of larger parks.

### Connectivity

Add LCSD signage: site name, map, rules, info, etc.

### Quality

Add more shaded seating and shade to existing seating. • Allow street markets.

### Design/Maintenance

Remove fences. • Replace waterfront fences with lower one.



# Tong Shui Road Garden



## Ratings

Accessibility



Connectivity



Quality



Design/  
Maintenance



Popularity



## Location and Overview

Located on Wharf Road, North Point, Eastern District.

Category: Park

Primary User: Resident

## Features

Children's playground • Pebble Walking Trail • Elderly Fitness Station •  
Four rain shelters • Benches

## Suggestions

### Connectivity

Black fence obstructs access to water. Replace on east side of garden with a noise barrier against the Island Eastern Corridor. Remove from west side of garden. • Remove wall adjacent to Provident Garden and continue the promenade to connect. • Move playground to east side of garden and extend its size.

### Quality

Benches near cement wall are not shaded and some are broken. Repair broken benches and plant trees for shade.

### Design/Maintenance

Add color to the site by painting cement wall. Paint a harbour theme mural to match playground. • Cement block on east side of playground. Remove and build large playground above this area.

# Provident Garden



## Ratings

Accessibility



Connectivity



Quality



Design/  
Maintenance



Popularity



## Location and Overview

Located on Wharf Road, North Point, Eastern District.

Category: Park

Primary User: Resident

## Features

Children's playground • Arbours • Benches • Promenade

## Suggestions

### Accessibility

Add site signs to all entrances using LSCD logo.

### Connectivity

Plants block gate that leads to tunnel and promenade. Remove barriers to the entrance. • Remove the wall adjacent to Tong Shui Road Garden and continue the promenade. • Move playground to east side of garden and extend its size.

### Quality

Island Eastern Corridor obstructs harbour view. Build underpass extending from promenade to highway and connecting to nearby playground.

### Design/Maintenance

Tunnels under residential buildings lead to waterfront LSCD promenade. Add lighting in tunnel and paint concrete walls. • Add lighting to promenade and paintings, mural, or mosaic to concrete wall.



# Whitfield Road Rest Garden



## Ratings

Accessibility



Connectivity



Quality



Design/  
Maintenance



Popularity



## Location and Overview

Located on Whitfield Road, Causeway Bay, Eastern District.

Category: Park.

Primary User: Resident.

## Features

Pergolas • Sitting Benches • Landscape Planting

## Suggestions

### Connectivity

The area adjacent to the park appears unused. Expand the park and extend the promenade.

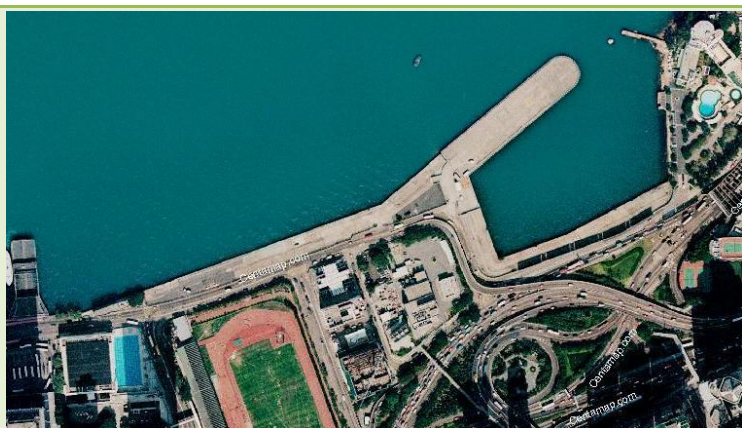
### Quality

Park contains few benches. Add more benches. • No food or beverage nearby. Add dispenser machines.

### Design/Maintenance

Wood fences surrounding the gardens block the view of the plants. Remove them. • Chipped paint on gazebo roof. Repaint gazebo.

# Wan Chai Waterfront Promenade



## Ratings

Accessibility



Connectivity



Quality



Design/  
Maintenance



Popularity



## Location and Overview

Located on Hung Hing Road, Wan Chai, Wan Chai District.

Category: Promenade

Primary User: Resident

## Features

Open lawn areas • Boardwalks

## Suggestions

### Accessibility

Route to promenade from hinterland: narrow, unclear. Add signage directing visitors to site. • Site sign not located at all entrances. Text of site name is hard to see. Place a standard LCSD site sign at all entrances.

### Quality

Plant trees along outer perimeter of park to block noise, add shaded seating. • Fence along waterfront does not appear sturdy—signs say “do not lean.” Replace fence with a see-through, glass barrier. • Remove temporary office and utilize space for dispenser machines and permanent bathrooms.

### Design/Maintenance

Remove chain-link fence. Plant trees along outside of chain-link fence. Replant flowers on brick. • White fence with barbed wire on the top separates helicopter pad from park. Remove fence.

# Wan Chai Sports Ground



## Ratings

Accessibility



Connectivity



Quality



Design/  
Maintenance



Popularity



## Location and Overview

Located on Tonnochy Road, Wan Chai District.

Category: Sports Facility

Primary User: Resident

## Features

400m 8-lane athletic track • 70m 4-lane warm-up track • 220m 2-lane warm-up track with one end connected to the 70m 4-lane warm-up track • Shot put, discus, javelin, and hammer throw rinks • Areas for long jump and pole vault • Two refreshment kiosks • Spectator stand with 3,000 seats and 69 VIP seats • Record keeping room • First aid room • Sports Equipment room • Weight lifting room • Scoreboard

## Suggestions

**Accessibility**

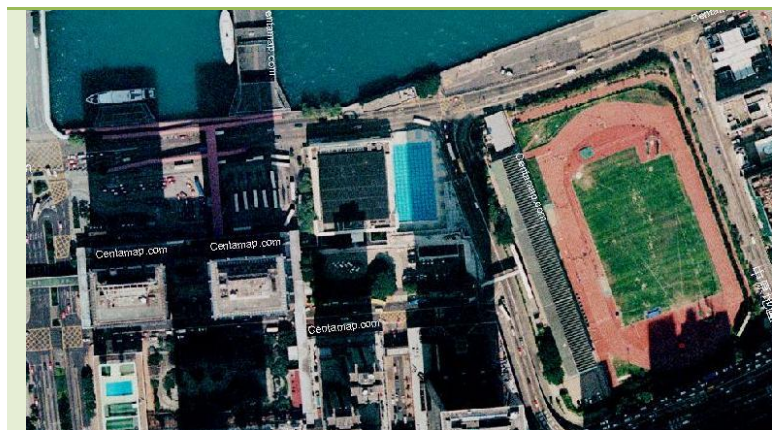
Add signs on sidewalks directing visitor towards entrance.

**Quality**

Construct seating and food-kiosks on the harbour-front side of sports ground. Continue the stands around the harbour perimeter of the building as a raised viewing platform.



# Wan Chai Swimming Pool



## Ratings

Accessibility



Connectivity



Quality



Design/  
Maintenance



Popularity

N/A

## Location and Overview

Located on 27 Harbour Road, Wan Chai District.

Category: Pool

Primary User: Resident

## Features

Main pool • Fitness room • Spectator stand • Plant room • First aid room • Changing rooms • Parking lot • Drinking fountain

## Suggestions

### Accessibility

Difficult to find entrance. Mark entrance with LCSD sign.

### Connectivity

Located near Wan Chai Sports Ground , Harbour Road Sports Centre, and promenades. Passage to nearby LCSD sites and waterfront is not clear. Add signage.

### Design/Maintenance

Walls between pool and sidewalk are uninviting. Repaint walls, with murals and signs.

# Harbour Road Sports Centre



## Ratings

Accessibility



Connectivity



Quality



Design/  
Maintenance



Popularity



## Location and Overview

Located on 27 Harbour Road, Wan Chai District.

Category: Sports Facility

Primary User: Resident

## Features

Arena • Seven squash courts • Two dance rooms • Table tennis room • Spectator stand • Toilets and changing rooms • Conference room • Manager room • Supervisor room • Pantry  
Viewing Platform • Drinking fountains

## Suggestions

### Accessibility

Entrances hard to find. Add signs around perimeter of building towards entrance. Add more visible site signs at entrances.

### Quality

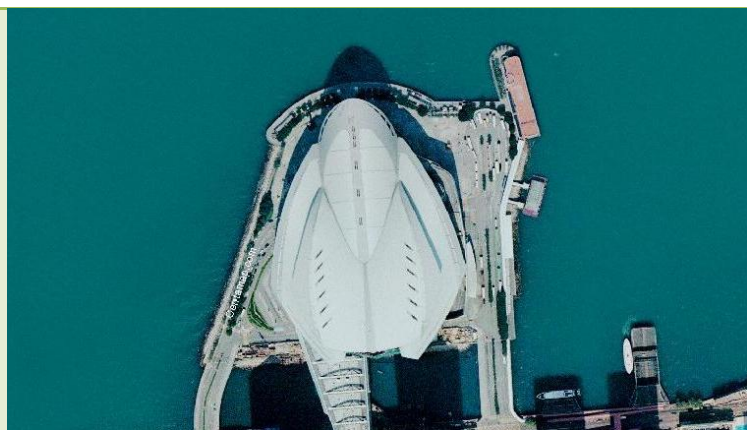
Signs publicizing activities are hung on fence. Publish these signs in both English and Chinese.

### Design/Maintenance

Orient benches towards harbour-front. • Allow temporary food-kiosks. Replace stair area with shaded benches and tables. • Add trees and greenery to platform. • Remove pipe at edge of platform. • Add a Leisure Link Self-service Kiosk. • Pink wall along perimeter of building has no signs and is uninviting. Replace fence with one similar to the other side of the centre.



# Wan Chai Temporary Promenade



## Ratings

Accessibility



Connectivity



Quality



Design/  
Maintenance



Popularity



## Location and Overview

Located on Expo Drive, Wan Chai District.

Category: Promenade

Primary User: Tourist

## Features

Eleven rain shelters • Benches • Raised sitting platform

## Suggestions

### Accessibility

Replace concrete ground with brick and add trees, flowers for colour.

### Connectivity

Connect to Wan Chai Waterfront Promenade with bike path or waterfront walk. • Add signs directing visitors to and from promenades.

### Quality

Allow outdoor seating along the promenade and park area for restaurants. Exclude celebration days from seating licensing.

### Design/Maintenance

Allow outdoor performances on promenade area outside of centre. • Remove sitting-areas/steps and replaces with shaded benches, picnic tables or food-kiosk.

# Hong Kong City Hall



## Ratings

### Accessibility



### Connectivity



### Quality



### Design/ Maintenance



### Popularity



## Location and Overview

Located at 5-7 Edinburgh Place, Central & Western District.

Category: Cultural Facility

Primary User: Resident

## Features

Concert hall • Theatre • Exhibition hall • Box office • Enquiry counter • Foyer bar • Western and Chinese restaurants • Art shop • Lending library • Computer centre • Extension activities room • Fast food kiosk • Cloakroom • Memorial garden

## Suggestions

### Accessibility

Remove glass walls and create more entrances, leaving brick walls for seclusion.

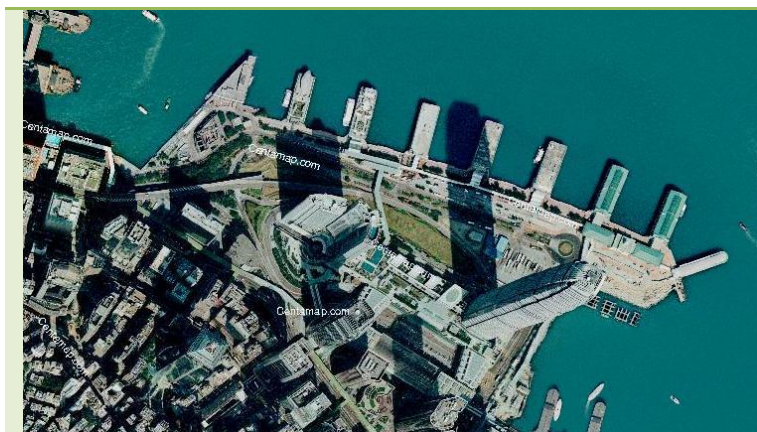
### Vibrancy

Take Queen's pier out of storage and replace it. • Shops and eating areas located inside building. Snack and beverage vendor outside of garden.

### Quality

Add informational plaques for the history of the area. • Add trees for shade on platform. Replace benches with wooden ones.

# Promenade Fronting Piers 1-9



## Ratings

Accessibility



Connectivity



Quality



Design/  
Maintenance



Popularity



## Location and Overview

Located on Man Kwong Street, Central & Western District.

Category: Promenade

Primary User: Tourist

## Features

Benches

## Suggestions

### Accessibility

Add signage on promenade to MTR.

### Connectivity

Add staircase through cement wall at Pier 2. • Replace flooring with stone or brick.

### Quality

Add binoculars for viewing. • Add travelators from the IFC Mall to the Central Ferry Pier. • Allow food-kiosks and more street markets. • Add shaded seating/tables along wall. • Add rooftop eating and sitting areas. • Add recycling and trash bins on promenade.

### Design/Maintenance

Replace concrete barrier/guard rail with see-through barrier.



# Sun Yat Sen Memorial Park and Swimming Pool Complex



## Ratings

Accessibility  
N/A

Connectivity  
N/A

Quality  
N/A

Design/  
Maintenance  
N/A

Popularity  
N/A

## Location and Overview

Located on Eastern Street North, Central & Western District.

Category: Park

Primary User: Tourist/Resident

## Features

1 Jogging Trail • 1 Central Lawn • 1 Elderly Fitness Corner • 7-a-side Artificial Turf pitch • 2 Basketball Courts • 1 Children's Playground

## Suggestions

### Accessibility

Add subways to park for greater access.

### Quality

Western Park Sports Centre is behind wall. Connect the Centre with the park. Continue promenade past the Sports Centre. • Create harbour views by making windows, decks along waterfront side of swimming pool complex. Allow restaurants and food kiosks on north side of building. • Ensure there is shaded seating along promenade.

# Western Park Sports Centre



## Ratings

Accessibility



Connectivity



Quality



Design/  
Maintenance



Popularity



## Location and Overview

Located on 27 Harbour Road, Central & Western District.

Category: Pool

Primary User: Resident

## Features

Basketball, volleyball, netball, badminton, handball courts • Fitness room • Dance room • Four squash courts • Children's playroom • Central lawn • Pebble walking trail

## Suggestions

### Quality

Harbour view is obstructed at ground-level. Remove fence blocking waterfront from sports centre. Use windows in building for viewing points. • Food kiosk on the third floor. Add signs to the kiosk. Advertise the kiosk at the floor level and within Sun Yat Sen Memorial Park. • Most information and brochures in Chinese. Advertise other events for LCSD sites at sports centre in both English and Chinese.

### Design/Maintenance

Add sign above Leisure Link Self-Service Kiosk.

# Belcher Bay Park



## Ratings

Accessibility



Connectivity



Quality



Design/  
Maintenance



Popularity



## Location and Overview

Located on Shing Sai Road, Kennedy Town, Central & Western District.

Category: Park

Primary User: Resident

## Features

One children's playground • One jogging trail • 1 amphitheatre with spectator stand • 1 central lawn • 1 pebble walking trail

## Suggestions

### Connectivity

Connect dock area to park through bike path or walkway and directional signage. • Create trails from running path to main path.



# Kennedy Town Temporary Recreation Ground



## Ratings

Accessibility



Connectivity



Quality



Design/  
Maintenance



Popularity



## Location and Overview

Located on Sai Ning Street, Kennedy Town, Central & Western District.

Category: Park

Primary User: Resident

## Features

Two hard-surfaced soccer pitches • Basketball court • Promenade •  
One sitting-out area • Mobile toilets • Mobile changing rooms • One  
landing step

## Suggestions

### Accessibility

Add signs from Bus terminus.

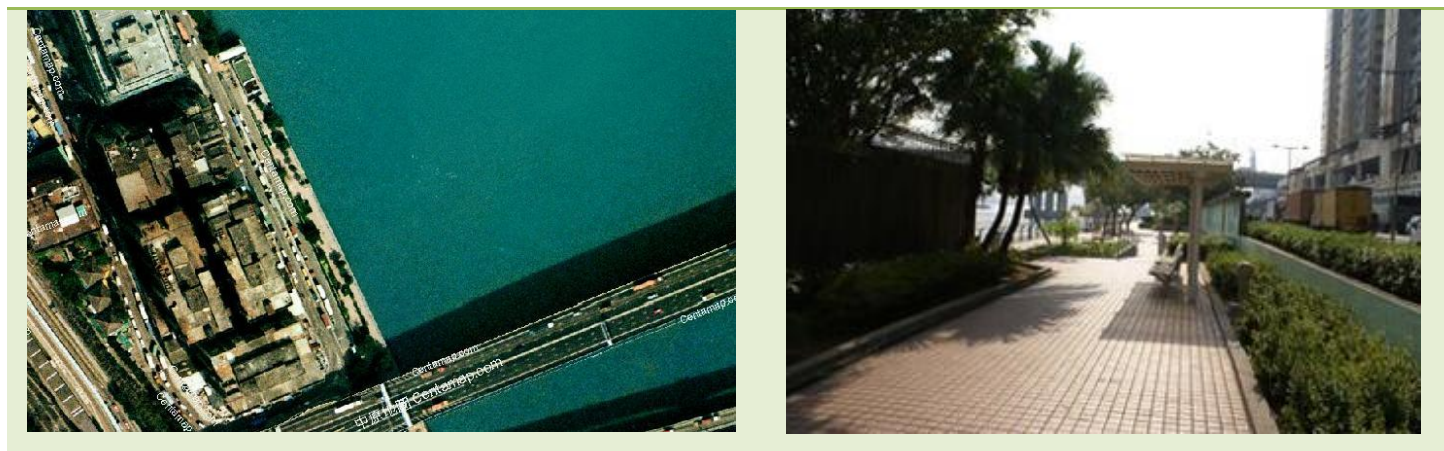
### Vibrancy

Extra benches and trash bins are stored behind east fence. • Make a  
shed that serves as storage and permanent changing room/toilets.

### Quality

Benches covered with arbours and greenery. Replace benches with  
double-sided ones to view either soccer or water. • Recreation ground  
is located in an industrial area. Add trees along the back to block from  
road and add greenery. • Painting the soccer pitch.

# Cheung Fai Road Promenade



## Ratings

Accessibility



Connectivity



Quality



Design/  
Maintenance



Popularity



## Location and Overview

Located on Cheung Fai Road, Tsing Yi, Kwai Tsing District.

Category: Promenade

Primary User: Resident

## Features

Sitting Benches • 4 Pavilions

## Suggestions

### Accessibility

Add signage in the surrounding area to the park. Add signage to and from Tsing Yi Promenade.

### Quality

No facilities at promenade. Add elderly fitness stations, game tables, foot massage path or playgrounds. • Add food and beverage kiosks or rent space to a restaurant or café.

### Design/Maintenance

Fenced utilities area with barbed wire fence at south end of park. Plant trees and add shrubbery to block view of equipment.

# Tsing Yi Swimming Pool



## Ratings

Accessibility



Connectivity



Quality



Design/  
Maintenance



Popularity

N/A

## Location and Overview

Located on Tsing King Road, Tsing Yi, Kwai tsing District.

Category: Sports Facility

Primary User: Resident

## Features

1 Main Pool • 1 Teaching Pool • 1 Toddlers' Pool • 1 Leisure Pool • 1 Shallow Pool • 1 Slide Pool • 1 Covered Spectator Stand • Shower & Changing Rooms • Toilets • Fee-paying Car Park (6 coach, 10 private car) • 1 Covered Spectator Stand • 1 General Restaurant

## Suggestions

### Connectivity

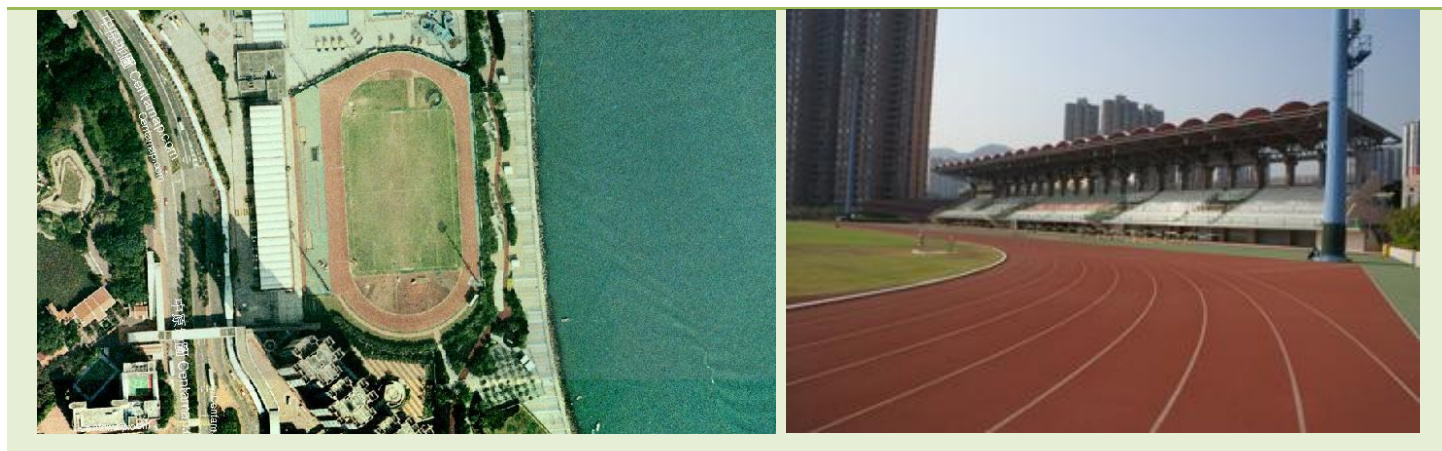
No direct route from restaurant to promenade. Open with connectivity through pool area.

### Quality

Add seating around the pool area. Add picnic tables.



# Tsing Yi Sports Ground



## Ratings

Accessibility



Connectivity



Quality



Design/  
Maintenance



Popularity



## Location and Overview

Located on Tsing King Road, Tsing Yi, Kwai Tsing District.

Category: Sports Facility

Primary User: Resident

## Features

400m Synthetic Surface Running Track • 1 Standard Natural Grass Pitch  
 • 1 Covered Spectator Stand • Changing Rooms and Toilets • Fee-paying Car Park (43 private car, 6 motor-cycle)

## Suggestions

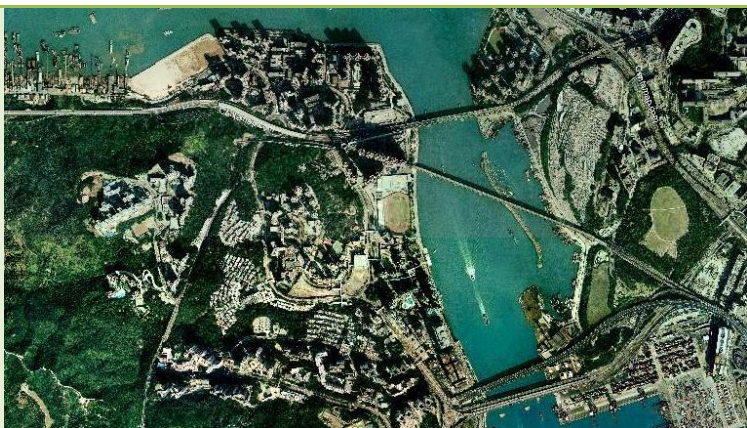
**Accessibility**

Add signage marking entrance to sports ground from the promenade.

**Connectivity**

Add entrance on the north side of the fence that borders the promenade.

# Tsing Yi Promenade



## Ratings

Accessibility



Connectivity



Quality



Design/  
Maintenance



Popularity



## Location and Overview

Located on Tsing King Road, Kwai Tsing District.

Category: Promenade

Primary User: Resident

## Features

2 Jogging Tracks • 1 Pebble Walking Trail • 6 Elderly Fitness Stations • 1 Piazza • 9 Fitness Stations • 2 Children's Playgrounds

## Suggestions

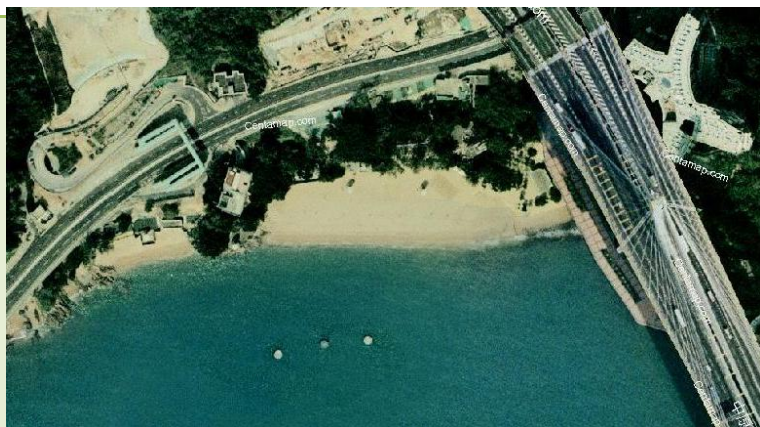
### Quality

Add seating or binoculars at top of viewing tower. • Allow buildings to use their ground floors for commercial use. • Allow restaurants outdoor seating. • Use ferry landing structure for toilets, game tables, or rent to business and allow public use of landing steps. • Allow permanent or temporary street markets. • Add large playground to the unused space in the middle of the promenade.

### Design/Maintenance

Replace arbours or grow plants on them for shade. • Remove fence blocking site sign.

# Lido Beach



## Ratings

Accessibility



Connectivity



Quality



Design/  
Maintenance



Popularity



## Location and Overview

Located at 11 1/2 milestone; Castle Peak Road, Tsuen Wan District

Category: Beach

Primary User: Resident

## Features

Toilets & Changing Rooms • 16 Shower heads • 1 Bathing Shed • 2 Beach Volleyball Courts • 2 Spectator Stands

## Suggestions

### Quality

Add barbeque pits. • Adding a playground would help the venue to cater to the all age groups. • The roof of the building would provide a shaded place to sit and enjoy the view. Open the stairs and provide seating on the roof.

### Design/Maintenance

Clean up the rocks on east end to extend the usable beach.



# Ting Kau Village Playground



## Ratings

Accessibility



Connectivity



Quality



Design/  
Maintenance



Popularity



## Location and Overview

Located at 11 milestone, Castle Peak Road, Tsuen Wan District

Category: Playground

Primary User: Resident

## Features

Children's Play Equipment • Arbours • Sitting Benches

## Suggestions

### Quality

The historic tree located in the playground provides shade.

### Design/Maintenance

Playground equipment is old, some is broken. Upgrade entire playground with more equipment. • Chain link fence surrounds playground. Replace with barrier plants.

# Ting Kau Beach



## Ratings

Accessibility



Connectivity



Quality



Design/  
Maintenance



Popularity



## Location and Overview

Located at 11 milestone, Castle Peak Road, Tsuen Wan District

Category: Beach

Primary User: Resident

## Features

Arbours • Sitting Benches

## Suggestions

### Accessibility

There is a lack of signage at the street entrances and through Ting Kau Village. Add signage to and from the beach.

### Connectivity

Ting Kau Sitting-out Area is located under bridge, but not connected. Create a promenade that connects the two sites. • Add signage to and from the beach.

### Quality

Add barbeque pits. • There are only two benches at the beach. Add more shaded benches to accommodate more users.

# Approach Beach



## Ratings

Accessibility



Connectivity



Quality



Design/  
Maintenance



Popularity



## Location and Overview

Located at 10 1/2 milestone, Castle Peak Road, Tsuen Wan District

Category: Beach

Primary User: Resident

## Features

Toilets & Changing Rooms • 12 Shower Heads • 28 Bathing Sheds •  
2 Barbecue Pits

## Suggestions

### Accessibility

There is a lack of signage at the street entrance and from the edge of the city nearby. Add signage to and from the beach.

### Quality

Add barbeque pits. • There is little seating available at the beach. Add benches with shade on the back side of the beach, away from water's edge.

### Design/Maintenance

Renovate the buildings and open for public use or rent to businesses. •  
There is rocks and debris in some areas of the beach. Clean up the beach to make it more usable.



# Tsuen Wan Park



## Ratings

Accessibility



Connectivity



Quality



Design/  
Maintenance



Popularity



## Location and Overview

Located on Tsuen Wan Road, Tsuen Wan, Tsuen Wan District

Category: Park

Primary User: Resident

## Features

1 Children Playground • 2 Fitness Stations • 9 Elderly Fitness Stations •  
1 Jogging Trail • 1 Piazza • 1 Pebble Walking Trail • 3 Drinking  
Fountains

## Suggestions

**Quality**

Large vacant lot borders the park on 3 sides. Expand the park into this land. Allow food kiosk. • Cover the existing benches.

**Design/Maintenance**

Barbed-wire fence along the border of the MTR station. Replace fence.

- The fountains in the park are not functioning and are in need of repair.

# Tsuen Wan Riviera Park



## Ratings

Accessibility



Connectivity



Quality



Design/  
Maintenance



Popularity



## Location and Overview

Located on Tsuen Wan Road, Tsuen Wan, Tsuen Wan District.

Category: Park

Primary User: Resident

## Features

1 Soccer Pitch • 1 Gateball Court • 4 Tennis Courts • 1 Basketball cum Volleyball Court • 1 Basketball Practice Court • 7 Fitness Stations • 4 Elderly Fitness Stations • 1 Pebble Walking Trail • 1 Walking Tile • 1 Drinking Fountain

## Suggestions

### Accessibility

Add signage both to and from these attractions and park.

### Connectivity

Wall between Tsuen Wan Park and Tsuen Wan Riviera park. Remove wall.

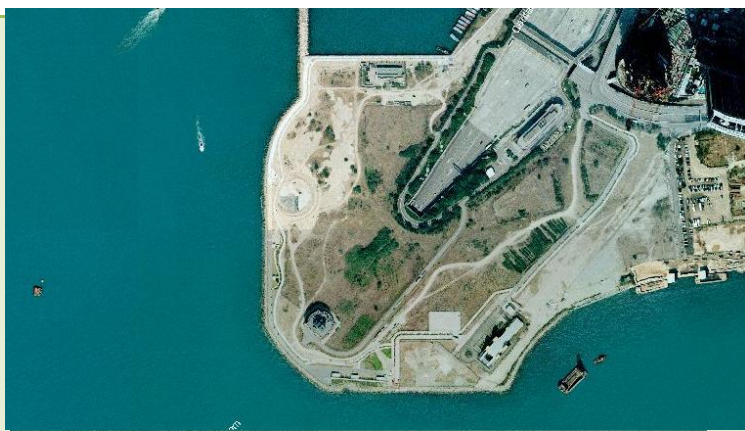
### Quality

Promenade along the water's edge is closed and not maintained. Clean, repave, add seating. Open area for public use

### Design/Maintance

Chain-link fences at northern and southern ends of park. Plant trees in front of fences.

# West Kowloon Waterfront Promenade



## Ratings

Accessibility



Connectivity



Quality



Design/  
Maintenance



Popularity



## Location and Overview

Located on Austin Road West, Yau Tsim Mong District

Category: Promenade

Primary User: Resident

## Features

Landscape Planting • Sitting Benches • 12 Rain Shelters • 3 Children's  
Playground • 1 Bicycle Kiosk • 1 Cycling Ground • 1 Cycling Track  
• Toilets & Disabled Toilet

## Suggestions

### Connectivity

Site lacks sufficient signage. • Add site name signs and site layout maps.

### Quality

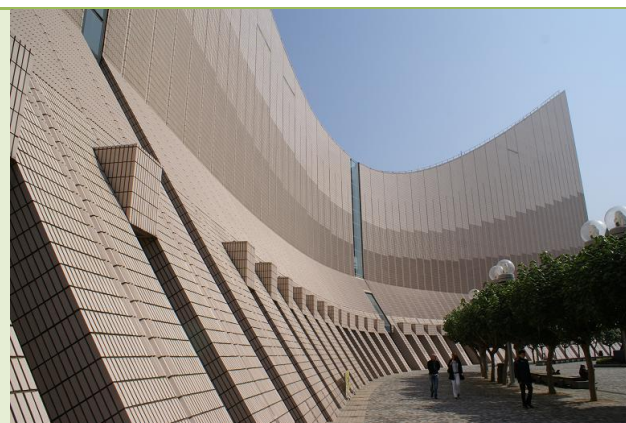
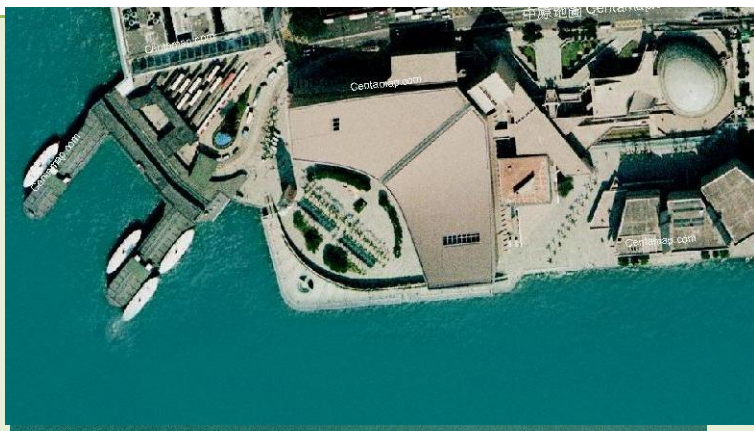
The site has an unobstructed view of the Central waterfront. • Expand  
playground areas. • Move facilities away from water and extend  
promenade.

### Design/Maintenance

Many parts of the boardwalk are in need of repair. • The cycle track is  
unpainted cement. Paint the cycle track. • The Dragon of Lanterns is in  
need of maintenance in many areas. Replace the sides with painted  
glass. • Replace dead plants.



# Hong Kong Cultural Centre



## Ratings

### Accessibility



### Connectivity



### Quality



### Design/ Maintenance



### Popularity



## Location and Overview

Located at 10 Salisbury Road, Yau Tsim Mong District.

Category: Cultural facility- Museum

Primary User: Tourists

## Features

One grand theatre • One concert hall • One studio theatre • One exhibition gallery • Four foyer exhibition areas • Five rehearsal rooms • Six practice rooms • Two function rooms • One box office • One enquiry counter • One performing arts shop • One Chinese restaurant • One Western restaurant • One coffee shop • One foyer cafe • One piazza including four hiring areas • One garden • One HKCC Arts Fair

## Suggestions

### Accessibility

Directly borders the Avenue of Stars, the Hong Kong Museum of Art, and the Hong Kong Space Museum.

### Quality

Remove skirting allowing for the addition of shops. • Install a glass viewing area against the present waterfront wall. • Place advertisements for upcoming events in Hong Kong. • Add more benches outside of the Cultural Centre. • Install a historical plaque for the clock tower or recreate parts of the train station for education and exhibition.

# Hong Kong Museum of Art



## Ratings

Accessibility



Connectivity



Quality



Design/  
Maintenance



Popularity



## Location and Overview

Located at 10 Salisbury Road, Yau Tsim Mong District.

Category: Cultural facility- Museum

Primary User: Tourists

## Features

Seven exhibition galleries • One lecture hall • One bookshop • One café • One enquiry counter • One box office

## Suggestions

### Connectivity

Add signage on the promenade to the Starbucks and the restaurant on the upper deck. • Make spiral staircase adjacent to Avenue of Stars open, allowing people to go into the Museum. • Add benches next to staircase behind Museum. • Add shrubbery with benches.

### Quality

Replace walls on upper deck with a glass fence. • Hang giant banners from the front of the museum. Try not to keep plain wall. • Make banners artwork or advertisement for public events and art exhibits. • Add a sculpture in the open area in front of museum. • Build restaurant/café underneath the upper deck with outdoor seating.

# Hong Kong Space Museum



## Ratings

### Accessibility



### Connectivity



### Quality



### Design/ Maintenance



### Popularity



## Location and Overview

Located at 10 Salisbury Road, Yau Tsim Mong District.

Category: Cultural facility- Museum

Primary User: Tourists

## Features

Two exhibition galleries • One space theatre • One lecture hall • One gift shop • One enquiry counter • One box office

## Suggestions

### Connectivity

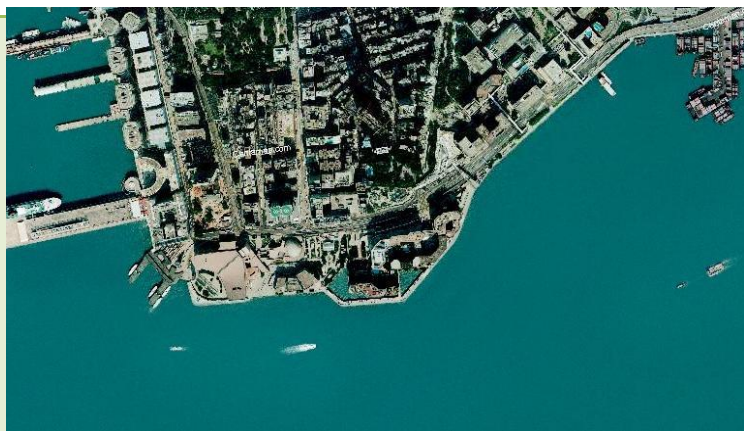
Add a site sign in the back of the building and have smaller directional signs nearby.

### Quality

Paint dome to look like a globe or have covers made for decoration, for example, Hong Kong flag, constellations, and cultural advertisements. • Implement a space theme outside. Add more greenery around dome and in back of building. • Add a small space-themed playground.



# Tsim Sha Tsui Promenade



## Ratings

Accessibility



Connectivity



Quality



Design/  
Maintenance



Popularity



## Location and Overview

Located on Salisbury Road, Tsim Sha Tsui, Yau Tsim Mong District.

Category: Promenade

Primary User: Tourists

## Features

Sitting benches • Arbours • One water fountain • One general restaurant • One light refreshment kiosk • Seven mobile carts at Avenue of Stars for selling of snacks and drinks.

## Suggestions

### Accessibility

Area along promenade allows tour buses and city buses access to the promenade. • Add signaled crossing across Salisbury Road.

### Quality

Allow temporary street markets. • Orient the food carts on the other side of the promenade and make them face the harbour. Move star structures. • Use waterfront gift shops to advertise surrounding museums, attractions, and transportation. • Minimize the picture stands for a better view of the harbour. • Get rid of solicitors. • Add bars, restaurants and cafes all along the promenade.

# Tai Wan Shan Swimming Pool



## Ratings

Accessibility



Connectivity



Quality



Design/  
Maintenance



Popularity

N/A

## Location and Overview

Located on at 7 Wan Hoi Street, Hung Hom, Kowloon City District.

Category: Swimming Pool

Primary User: Residents

## Features

One main pool • One secondary pool • One diving pool • Three teaching pools • Three fun pools • One spectator stand

## Suggestions

**Quality**

Repaint outside wall. • Create underwater harbour viewing area with large glass wall. • Add more shaded seating to the open space around the pools.

# Tai Wan Shan Park Promenade



## Ratings

Accessibility



Connectivity



Quality



Design/  
Maintenance



Popularity



## Location and Overview

Located on at Wan Hoi Street, Hung Hom, Kowloon City District.

Category: Park, Promenade

Primary User: Residents

## Features

Three arbours • Nine garden benches • One large playground • Two basketball courts • One soccer pitch

## Suggestions

### Quality

Add shaded seating along the promenade, potted plants and trees. • Replace wall separating seats from playground with glass. • Add game tables. • Orient benches towards water. • Replace the fence between the playground and the promenade with glass. • Add bathroom

### Design/Maintenance

Paint the fence that is bordering the swimming pool. • Make the colour match the waterfront fence or create an ocean theme.



# Hoi Sham Park



## Ratings

Accessibility



Connectivity



Quality



Design/  
Maintenance



Popularity



## Location and Overview

Located on Yuk Yat Street, To Kwa Wan, Kowloon City District.

Category: Park

Primary User: Residents

## Features

One children's playground • One elderly fitness station • Two hard surface soccer pitches • Three game tables • One basketball court • One Hoi Sham Pavilion • One light refreshment kiosk • One mini-stage

## Suggestions

**Quality**

Remove fence that obstructs the bench in grassy patch. • Add more game tables. Add them under this shelter or in the open space behind it.

**Design/Maintenance**

Repaint miscellaneous areas throughout park. • Replace and add more benches to the promenade. • Provide shade over benches by revitalizing trees. • Clean up the promenade and paint the waterfront fence

# Hoi Bun Road Sitting-Out Area



## Ratings

Accessibility



Connectivity



Quality



Design/  
Maintenance



Popularity



## Location and Overview

Located on Hoi Bun Road, Kwun Tong District.

Category: Sitting-Out Area

Primary User: Residents

## Features

Sitting Benches • Arbours

## Suggestions

### Quality

Remove wall and relocate site sign. • Change the colour scheme. Repave area in behind waterfront fence. Replace railing. • Orient the benches towards the water.

# Lei Yue Mun Typhoon Shelter Breakwater Sitting-Out Area



## Ratings

Accessibility



Connectivity



Quality



Design/  
Maintenance



Popularity



## Location and Overview

Located on Shung Shun Street, Kwun Tong District.

Category: Sitting-out area

Primary User: Residents

## Features

Sitting benches • Arbours • Sea Wall

## Suggestions

### Quality

Green wall obstructs view of harbour. Remove green wall and build a promenade fence or build a platform allowing visitors to see over the wall. • Replace dead plants.



# Lei Yue Mun Sports Centre



## Ratings

Accessibility



Connectivity



Quality



Design/  
Maintenance



Popularity



## Location and Overview

Located on 6 Lei Yue Mun Path, Kwun Tong District.

Category: Sports Centre

Primary User: Residents

## Features

- One Main Arena (One basketball court cum four badminton courts)
- One fitness room
- One Sanshou training hall
- Two activity rooms
- One climbing activity room
- One table-tennis room
- Two squash courts
- Two American pool tables
- One children's playroom

## Suggestions

**Accessibility**

Put site name on side of building.

# Lei Yue Mun Waterfront Sitting-Out Area



## Ratings

Accessibility



Connectivity



Quality



Design/  
Maintenance



Popularity



## Location and Overview

Located on Lei Yue Mun Path, Kwun Tong District.

Category: Sitting-Out Area

Primary User: Residents

## Features

Benches • Arbours • Sea wall

## Suggestions

### Connectivity

Create a few openings throughout the fence allowing people to access the rocks. • Create an official map located at the entrance of the site that marks the sitting-out area, Lei Yue Mun Sports Centre and Lei Yue Mun Rest Garden.

### Quality

Roof lets sun through, heating up the benches underneath. Replace roof with wood, metal, or a material that provides true shade. • Add tables in front of Sports Centre to allow for people to eat, socialize, and play table games.

# Lei Yue Mun Rest Garden



## Ratings

Accessibility



Connectivity



Quality



Design/  
Maintenance



Popularity



## Location and Overview

Located in Lei Yue Mun, Kwun Tong District.

Category: Park

Primary User: Residents

## Features

One playground • Six chess tables • Arbours • Sitting Benches

## Suggestions

### Connectivity

Difficult to find Rest Garden from Waterfront Sitting-Out Area. Add signage in the residential area between these two sites.

### Quality

Add more playground equipment, extend playground boundary. •  
Remove the broken bottles and litter from the beach.